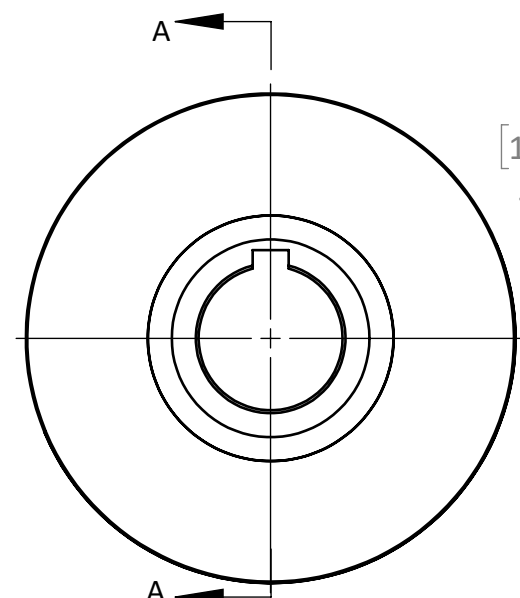
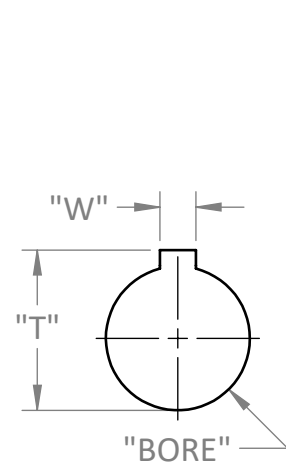


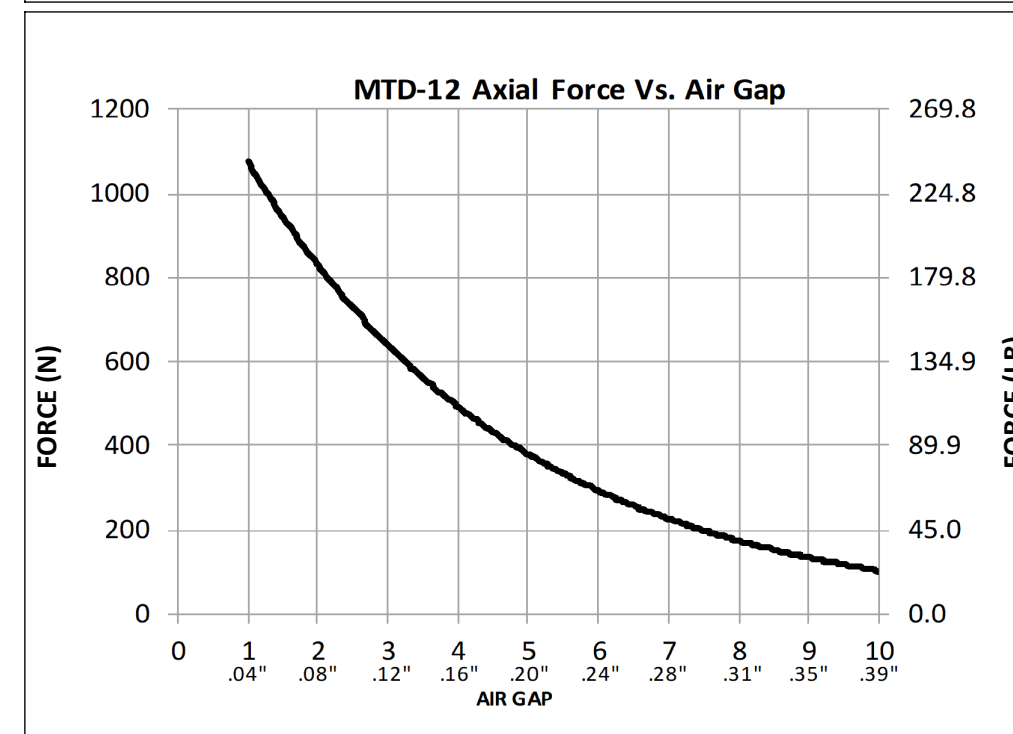
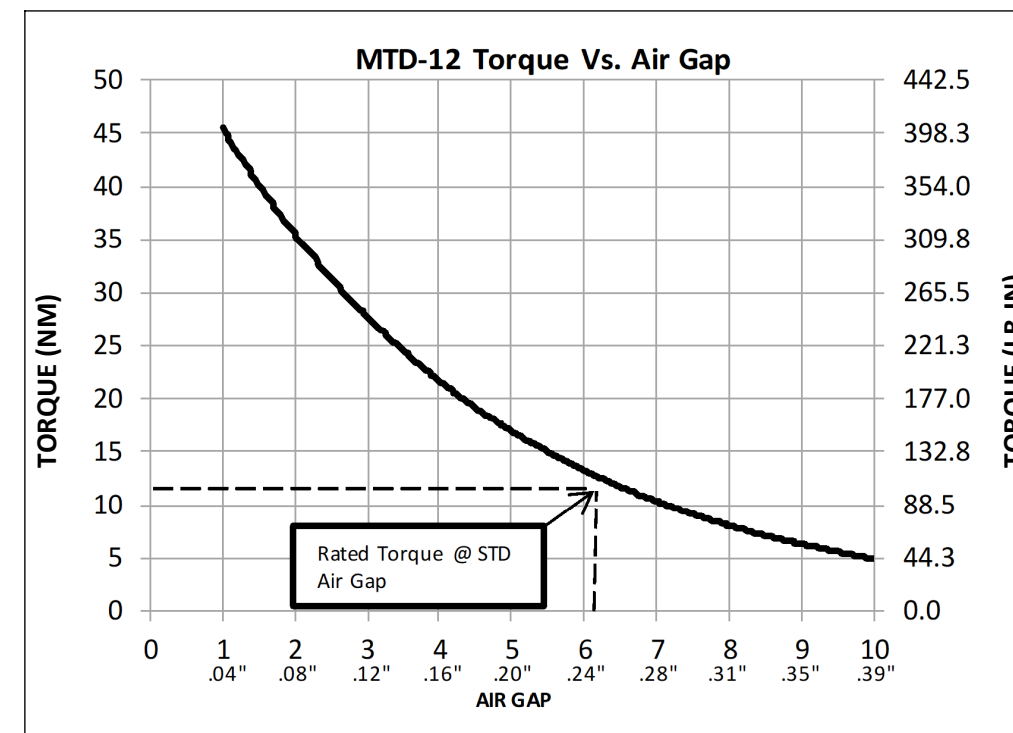
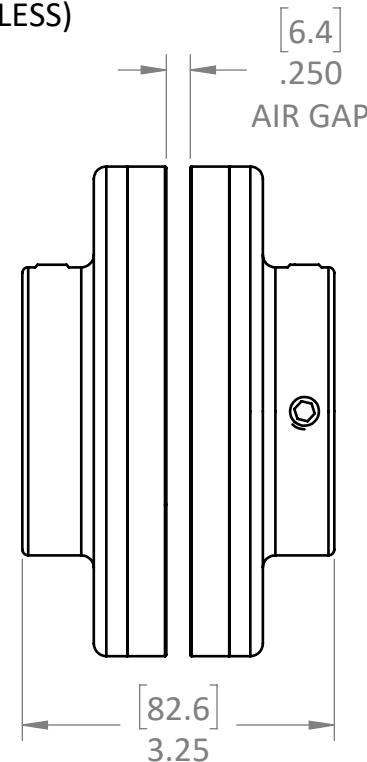
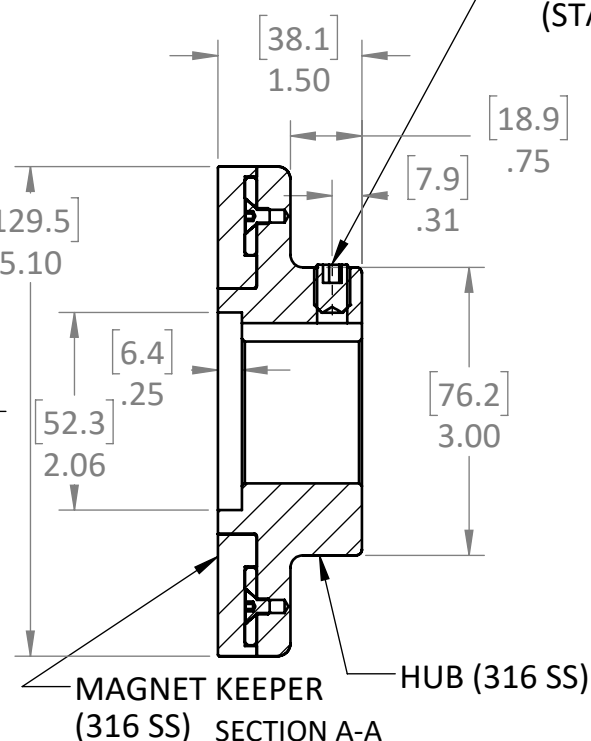
MODEL	RATED TORQUE @ STD. AIR GAP		BREAKAWAY TORQUE		MAX RPM
MTD-12	12.2 Nm	108 Lb-in	13.6 Nm	120 Lb-in	9,000*

*** BALANCING FOR HIGH SPEED APPLICATIONS REQUIRED**
(2x) SET SCREW (STAINLESS)

REVISIONS			
REV.	ECN.	DESCRIPTION	DATE



COUPLING HALF:
WEIGHT: 4.39 Lbs (1.99 Kg)



MODEL	BORE		W		T		SET SCREW (2x)
	mm ^{H8}	in ^{+0.001}	mm ^{+0.05}	in ^{+0.002}	mm ^{+0.25}	in ^{+0.010}	CUP POINT
* MTD-12-014	SOLID		-		-		-
MTD-12-002	20.00	.7874	6.00	.2362	22.80	.898	M5-0.8 x 20mm
MTD-12-017	25.4	1.000	6.35	.250	28.30	1.114	1/4-20 x 5/8
MTD-12-016	38.1	1.500	9.53	.375	42.39	1.669	3/8-16 x 1/2*

OTHER SIZES AVAILABLE; SPECIFY BOTH BORE AND KEYWAY

*** ONLY MTD-12-014 FROM STOCK**

THIS DRAWING IS THE PROPERTY OF MAGNETIC TECHNOLOGIES LTD. AND IS SUPPLIED ON THE EXPRESS CONDITION THAT IT SHALL NOT BE LENT, COPIED, REPRODUCED NO DISCLOSED TO ANY OTHER PERSON, IN WHOLE OR IN PART WITHOUT THE WRITTEN CONSENT OF MAGNETIC TECHNOLOGIES LTD.

USED ON MTD-12	SCALE 1:2	MATERIAL SEE PRT DWG	MAGNETIC TECHNOLOGIES LTD. 43 TOWN FOREST ROAD OXFORD, MA 01540
UNLESS OTHERWISE SPECIFIED: ALL DIMENSIONS ARE IN INCHES TOLERANCES: DECIMAL: .XX ± .01 .XXX ± .005 ANGULAR: ± 1° GEN. CONCENTRICITY: .001 T.I.R. MACH. FILLETS: .010 R MACH. EDGES: .015 R OR CHMF. UNSPECIFIED RADII: .015 R IN MICROINCHES RMS 32 GEOMETRIC: TO MIL-ST'D. 8 REMOVE ALL BURRS & SHARP EDGES		FINISH SEE PRT DWG	
		DRAWN ASM 9/8/2022	DESCRIPTION MTD-12 (316) Cut Sheet
		CHECKED	DWG. NO. _____ REV. _____
		SIZE: B	MTD-12-XXX (316)