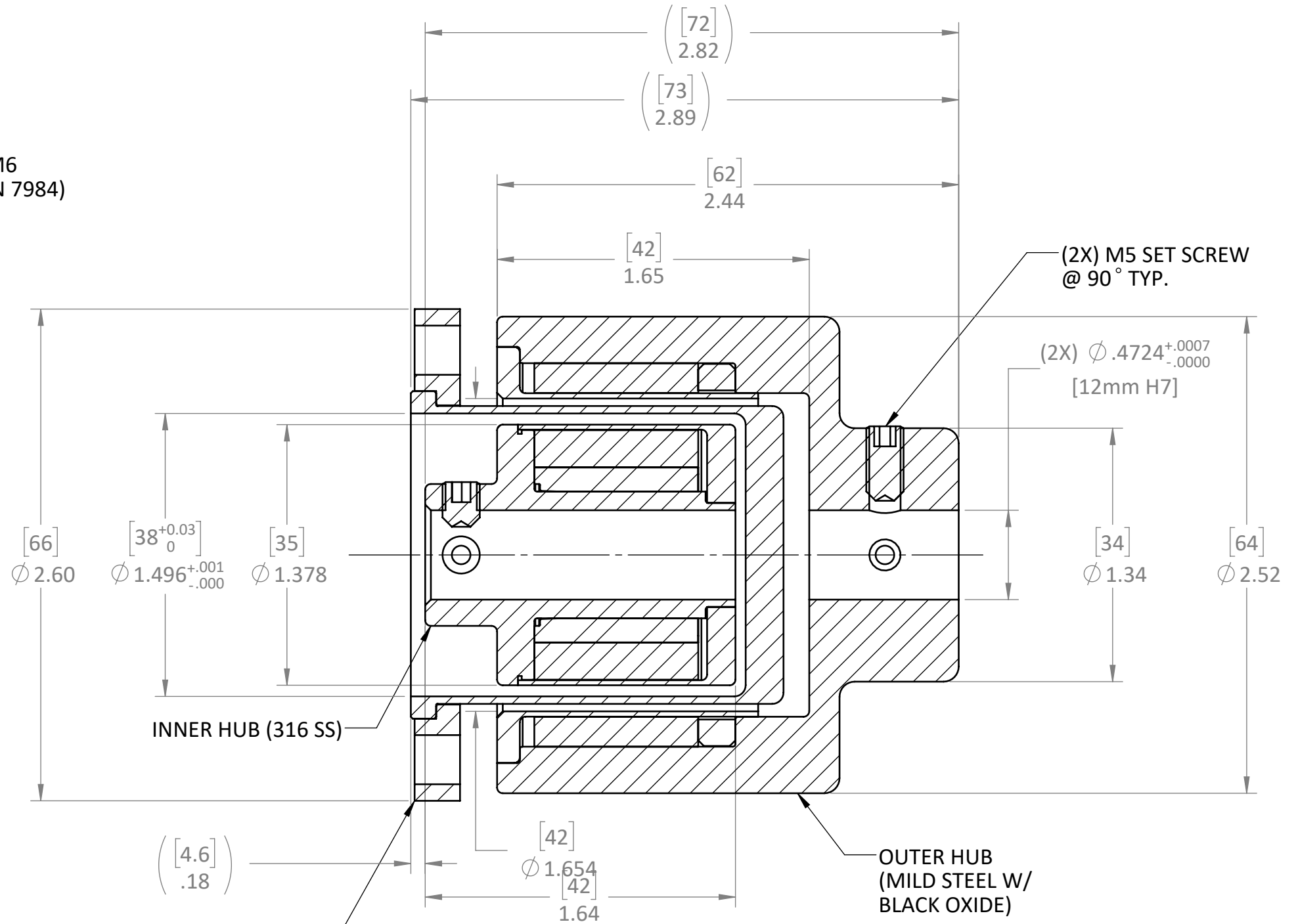
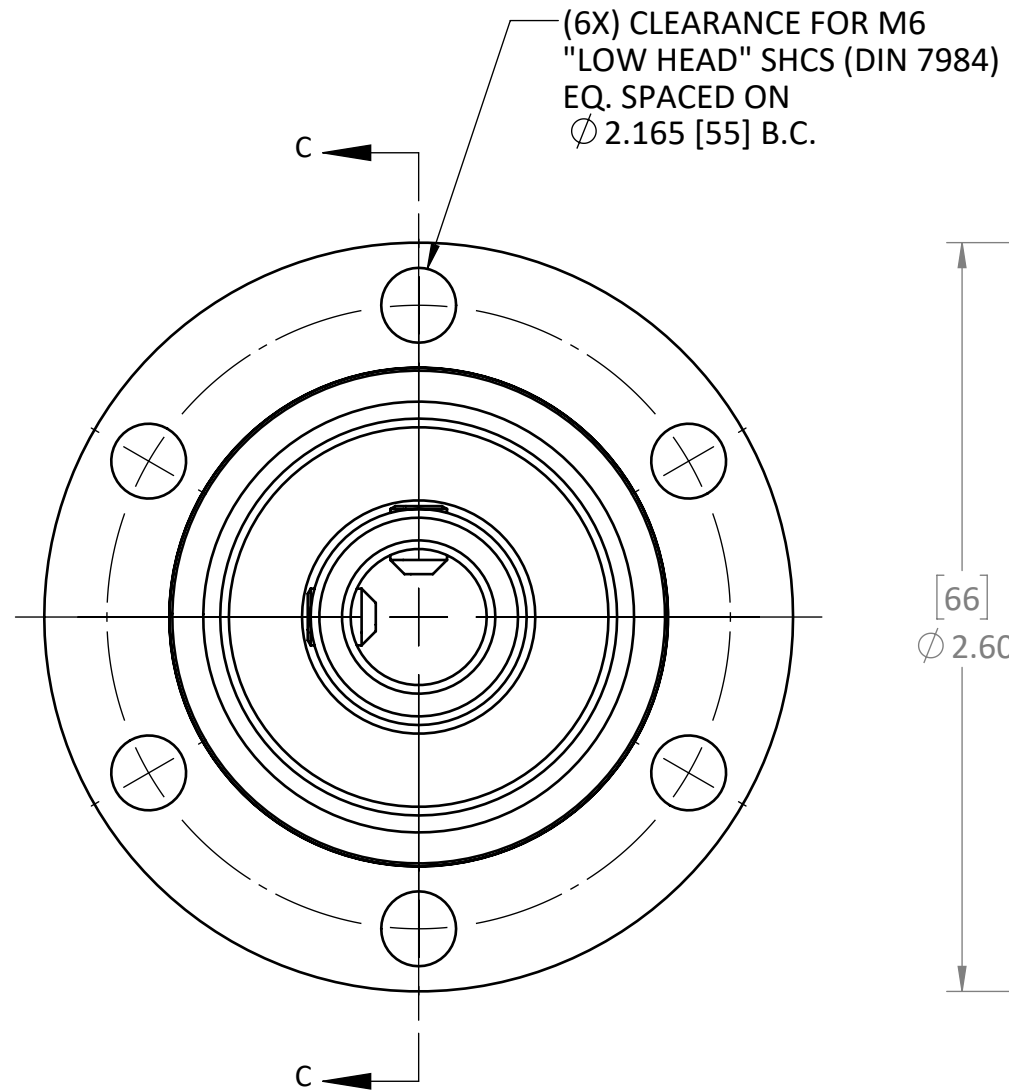


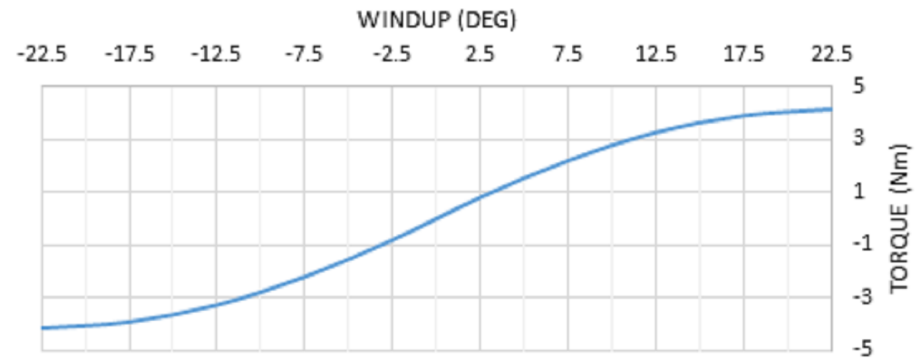
MTC-3	<b>RATED TORQUE</b>	<b>SLIP TORQUE</b>	<b>MAX SPEED</b>	<b>WEIGHT</b>	<b>* BALANCING FOR HIGH SPEED APPLICATIONS REQUIRED</b>	<b>REVISIONS</b>			
	3 Nm	3.5 Nm	18,000 RPM *	1 kg.		REV.	ECN.	DESCRIPTION	DATE
	27 LB-IN	31 LB-IN		2.2 lbs.					



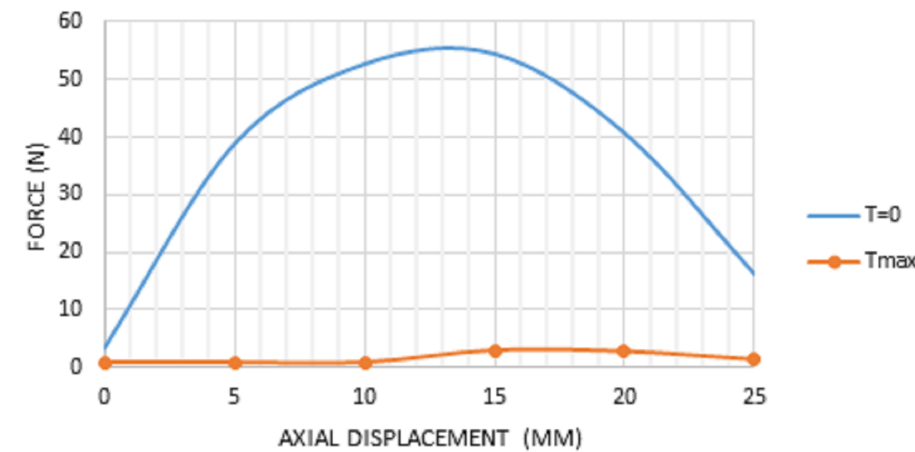
MTC-3 SB CONTAINMENT BARRIER  
RATED @ 800 PSI  
(SOLD SEPARATELY)

USED ON	SCALE 3:2	MATERIAL	<b>MAGNETIC TECHNOLOGIES LTD.</b> 43 TOWN FOREST ROAD OXFORD, MA 01540
UNLESS OTHERWISE SPECIFIED: ALL DIMENSIONS ARE IN INCHES TOLERANCES: DECIMAL: .XX ± .01 .XXX ± .005 ANGULAR: ± 1° GEN. CONCENTRICITY: .003 T.I.R. ASSY. CONCENTRICITY: .008 T.I.R. MACH. FILLETS: .010 R MACH. EDGES: .015 R OR CHMF. UNSPECIFIED RADII: .015 R IN MICROINCHES RMS 32 GEOMETRIC: TO MIL-ST'D. 8 REMOVE ALL BURRS & SHARP EDGES			
DRAWN R. A. 2/10/20		DESCRIPTION <b>3 Nm COUPLING</b>	
CHECKED ASM 1/4/2022		DWG. NO.	
SHEET 1 OF 2		REV.	
SIZE: B		<b>MTC-3 CUT SHEET</b>	

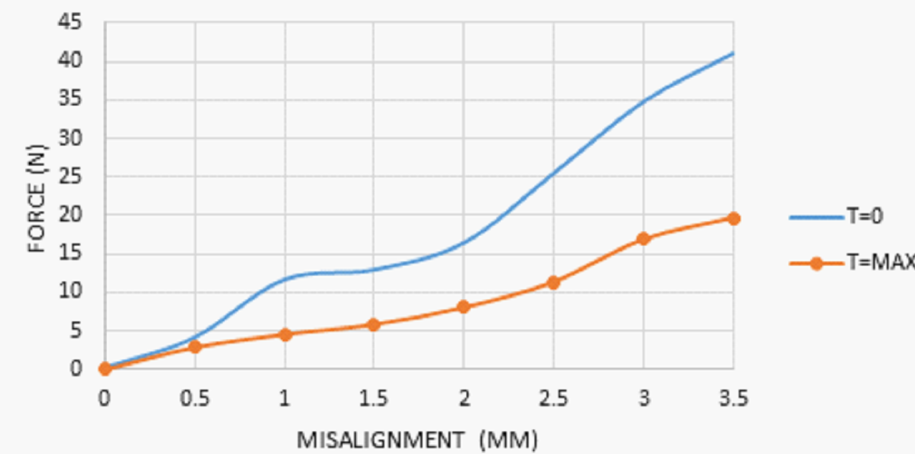
### MTC-3 Nd WINDUP



### MTC-3 Nd AXIAL FORCE

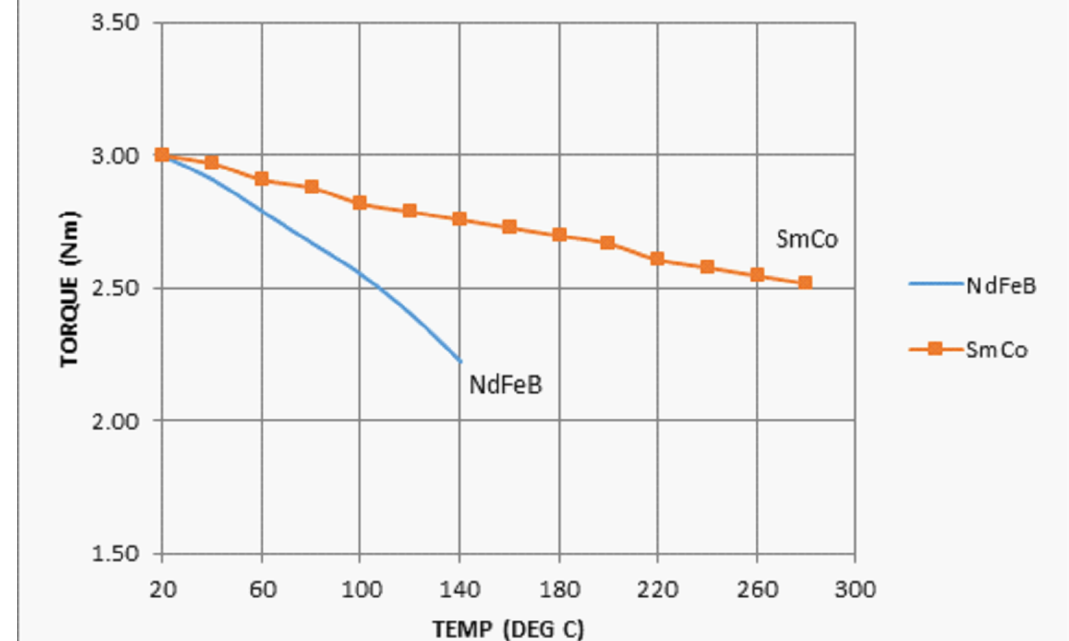


### MTC-3 Nd RADIAL MISALIGNMENT



**\*ABOVE CHARTS FOR NdFeB MAGNETS, SmCo CHARTS AVAILABLE UPON REQUEST**

### MTC-3 TEMP VS TORQUE



PROPRIETARY AND CONFIDENTIAL  
THIS DRAWING IS THE PROPERTY OF MAGNETIC TECHNOLOGIES LTD. AND IS SUPPLIED ON THE EXPRESS CONDITION THAT IT SHALL NOT BE LENT, COPIED, REPRODUCED OR DISCLOSED TO ANY OTHER PERSON, IN WHOLE OR IN PART WITHOUT THE WRITTEN CONSENT OF MAGNETIC TECHNOLOGIES LTD.

USED ON	SCALE <b>1:1</b>	MATERIAL	 43 TOWN FOREST ROAD OXFORD, MA 01540
UNLESS OTHERWISE SPECIFIED: ALL DIMENSIONS ARE IN INCHES TOLERANCES: DECIMAL: .XX ± .01 .XXX ± .005 ANGULAR: ± 1° GEN. CONCENTRICITY: .001 T.I.R. MACH. FILLETS: .010 R MACH. EDGES: .015 R OR CHMF. UNSPECIFIED RADII: .015 R IN MICROINCHES RMS 32 GEOMETRIC: TO MIL-ST'D. 8 REMOVE ALL BURRS & SHARP EDGES			
DRAWN R. A. 2/10/20		FINISH	<b>TECHNICAL DATA</b> DWG. NO. _____ REV. _____ <b>MTC-3 CUT SHEET</b>
CHECKED ASM 1/4/2022		SHEET 2 OF 2	
SIZE: B			