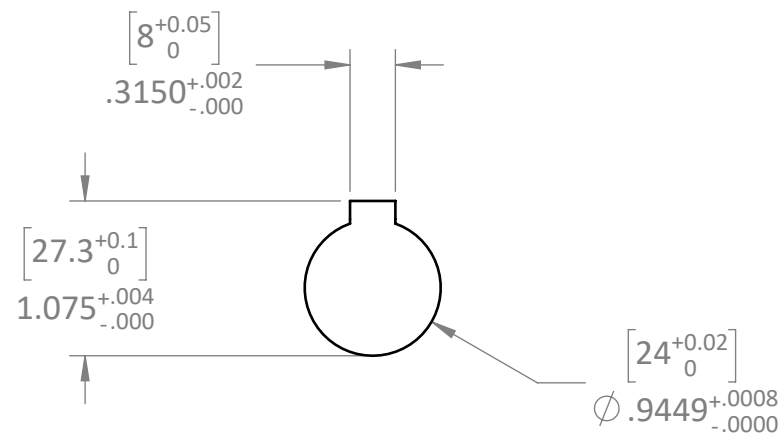
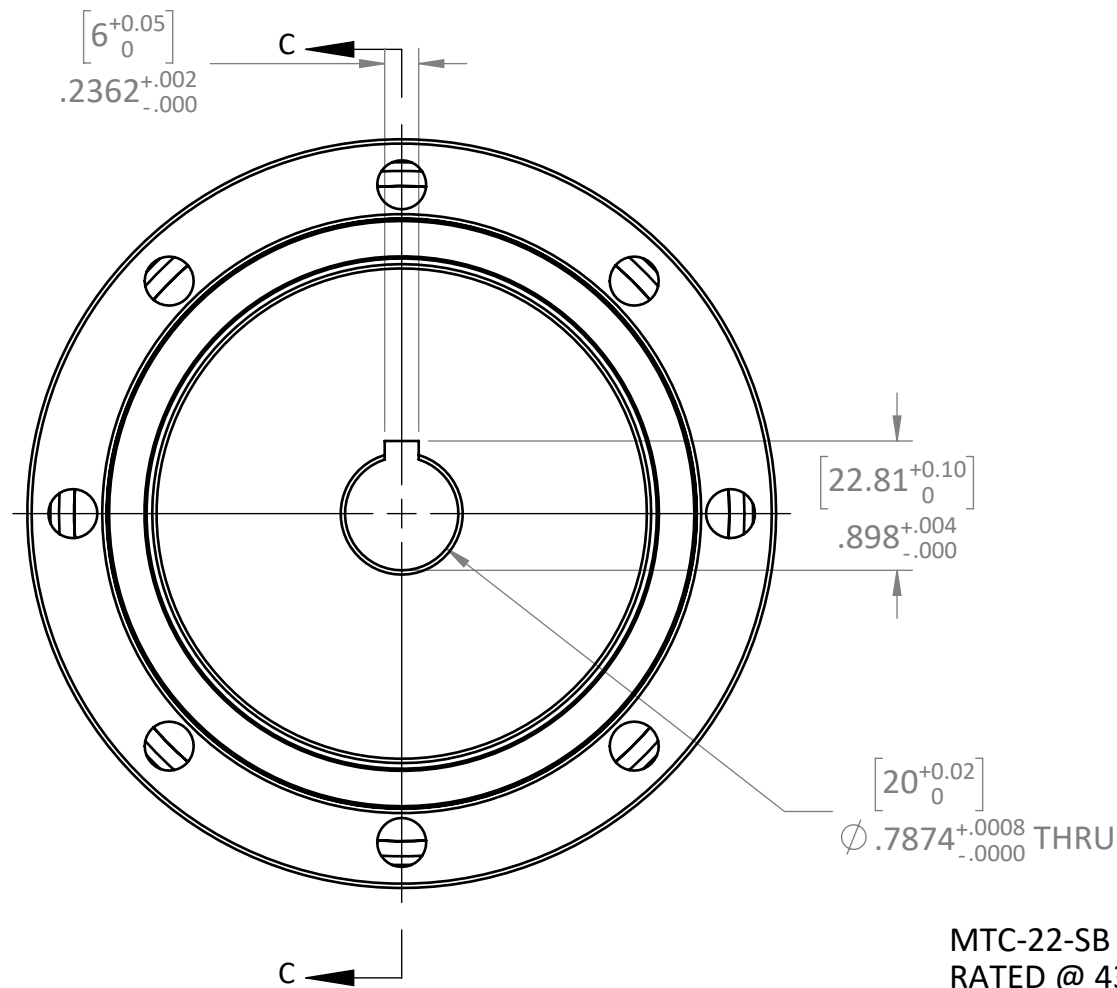


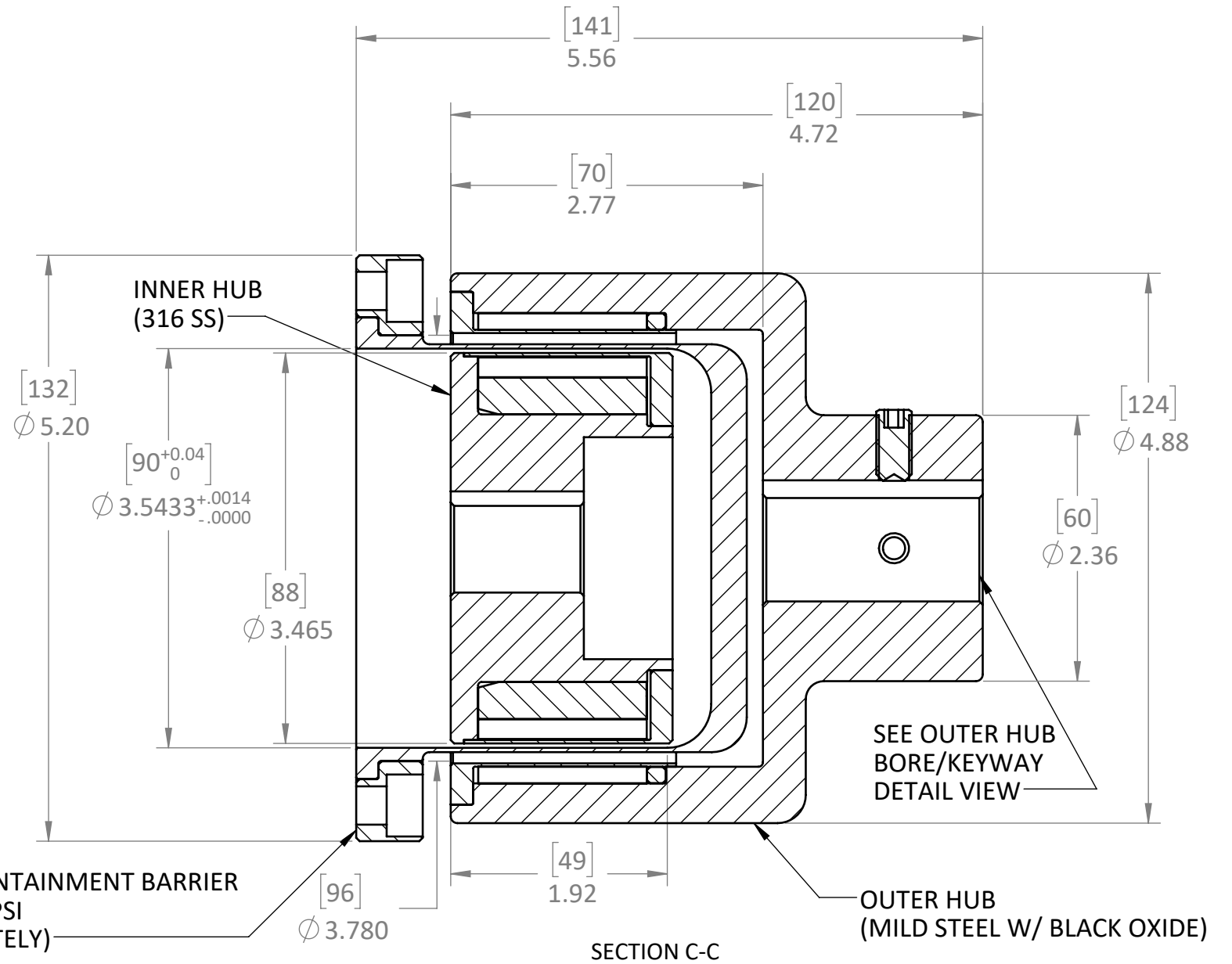
MTC-22	RATED TORQUE	SLIP TORQUE	MAX SPEED	WEIGHT
	22 Nm	35 Nm	9,400 RPM *	7 kg.
	200 LB-IN	310 LB-IN		16 lbs.

* BALANCING FOR HIGH SPEED APPLICATIONS REQUIRED

REVISIONS			
REV.	ECN.	DESCRIPTION	DATE



OUTER HUB BORE/KEYWAY DETAIL

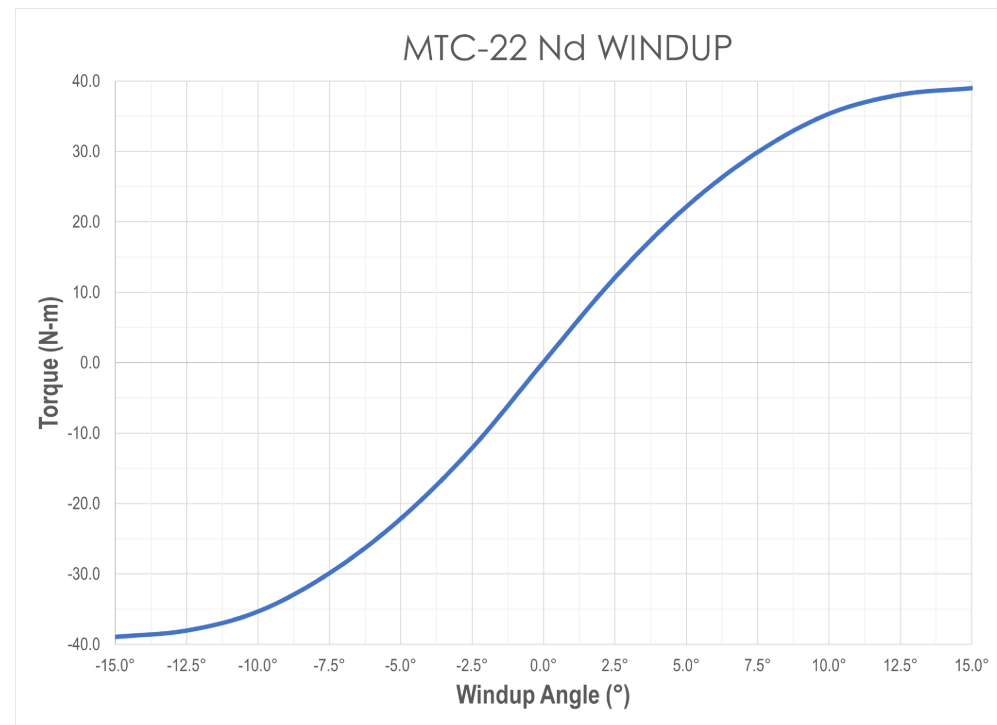
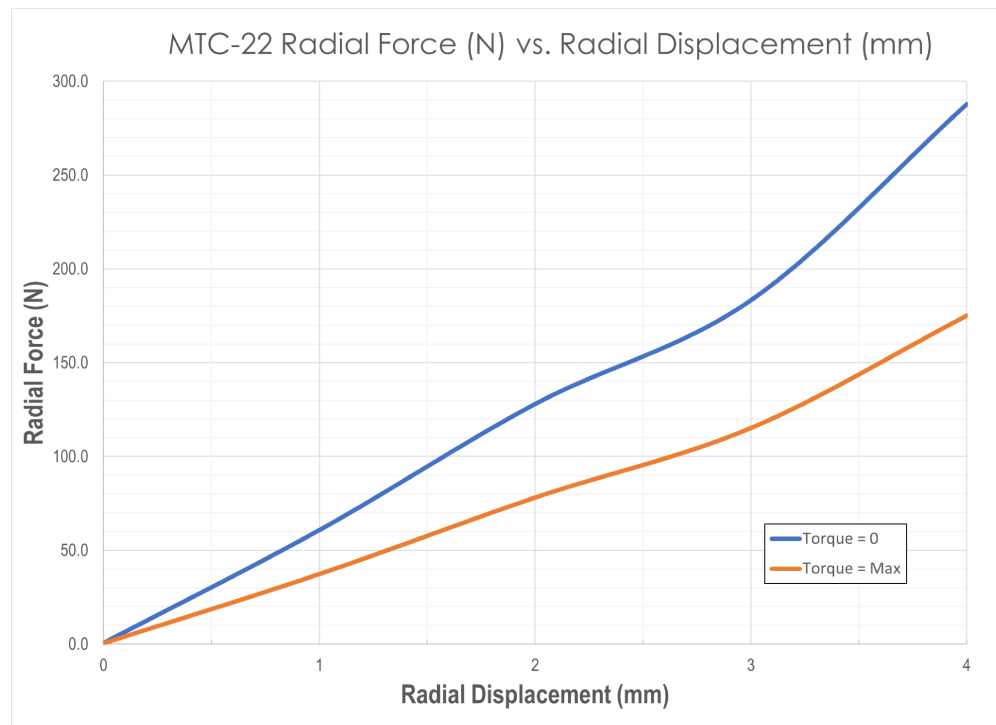
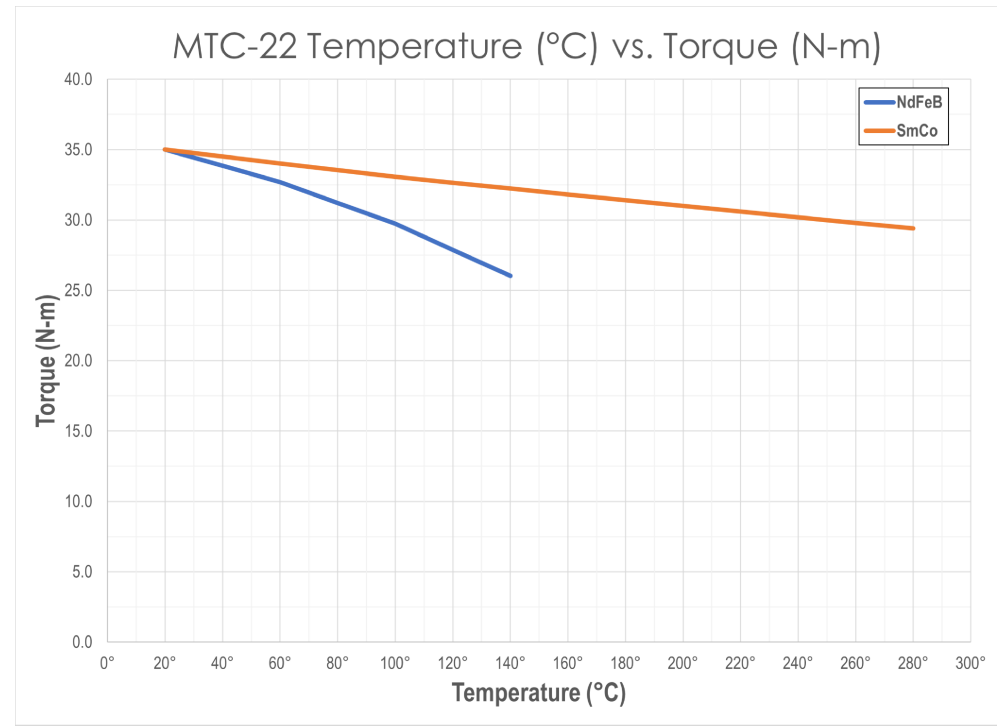
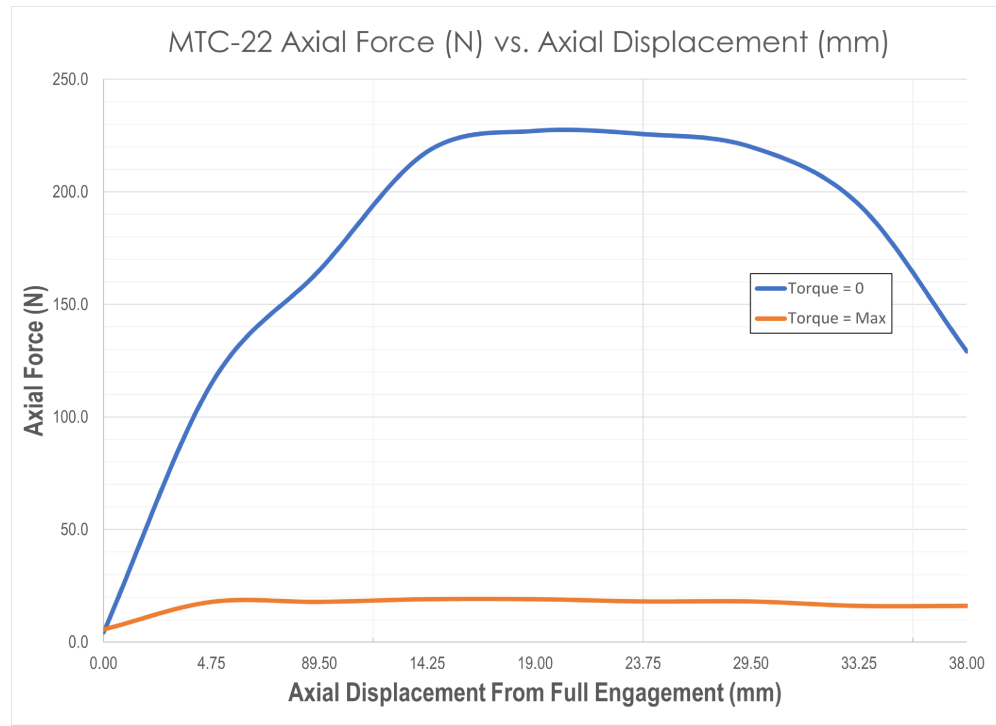


MTC-22-SB CONTAINMENT BARRIER
RATED @ 435 PSI
(SOLD SEPARATELY)

NOTE: MTC-22-001 SHOWN

THIS DRAWING IS THE PROPERTY OF MAGNETIC TECHNOLOGIES LTD. AND IS SUPPLIED ON THE EXPRESS CONDITION THAT IT SHALL NOT BE LENT, COPIED, REPRODUCED NO DISCLOSED TO ANY OTHER PERSON, IN WHOLE OR IN PART WITHOUT THE WRITTEN CONSENT OF MAGNETIC TECHNOLOGIES LTD.

USED ON	SCALE 3:4	MATERIAL	 MAGNETIC TECHNOLOGIES LTD. 43 TOWN FOREST ROAD OXFORD, MA 01540
UNLESS OTHERWISE SPECIFIED:		FINISH	
ALL DIMENSIONS ARE IN INCHES TOLERANCES: DECIMAL: .XX ± .01 .XXX ± .005 ANGULAR: ± 1° GEN. CONCENTRICITY: .003 T.I.R. ASSY. CONCENTRICITY: .008 T.I.R. MACH. FILLETS: .010 R MACH. EDGES: .015 R OR CHMF. UNSPECIFIED RADII: .015 R IN MICROINCHES RMS 32 GEOMETRIC: TO MIL-ST'D. 8 REMOVE ALL BURRS & SHARP EDGES		DRAWN ASM 3/1/2023 CHECKED	DESCRIPTION 22 Nm COUPLING
SHEET 1 OF 2		SIZE: B	DWG. NO. MTC-22 CUT SHEET



PROPRIETARY AND CONFIDENTIAL
 THIS DRAWING IS THE PROPERTY OF MAGNETIC TECHNOLOGIES LTD. AND IS SUPPLIED ON THE EXPRESS CONDITION THAT IT SHALL NOT BE LENT, COPIED, REPRODUCED NO DISCLOSED TO ANY OTHER PERSON, IN WHOLE OR IN PART WITHOUT THE WRITTEN CONSENT OF MAGNETIC TECHNOLOGIES LTD.

USED ON	SCALE 3:4	MATERIAL	 MAGNETIC TECHNOLOGIES LTD. 43 TOWN FOREST ROAD OXFORD, MA 01540
UNLESS OTHERWISE SPECIFIED: ALL DIMENSIONS ARE IN INCHES TOLERANCES: DECIMAL: .XX ± .01 .XXX ± .005 ANGULAR: ± 1° GEN. CONCENTRICITY: .001 T.I.R. MACH. FILLETS: .010 R MACH. EDGES: .015 R OR CHMF. UNSPECIFIED RADII: .015 R IN MICROINCHES RMS 32 GEOMETRIC: TO MIL-ST'D. 8 REMOVE ALL BURRS & SHARP EDGES			
SHEET 2 OF 2		SIZE: B	DESCRIPTION TECHNICAL DATA DWG. NO. _____ REV. _____ MTC-22 CUT SHEET