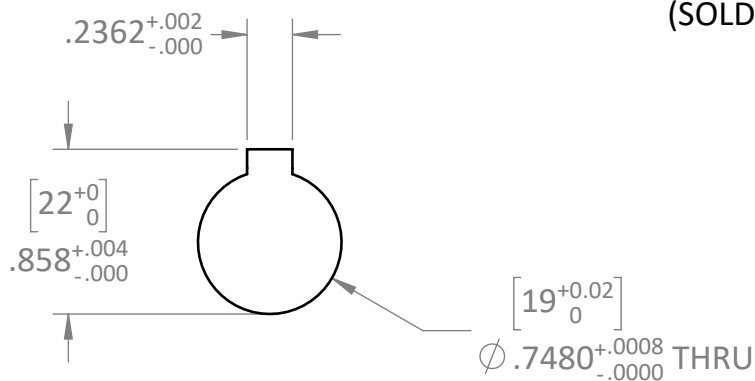
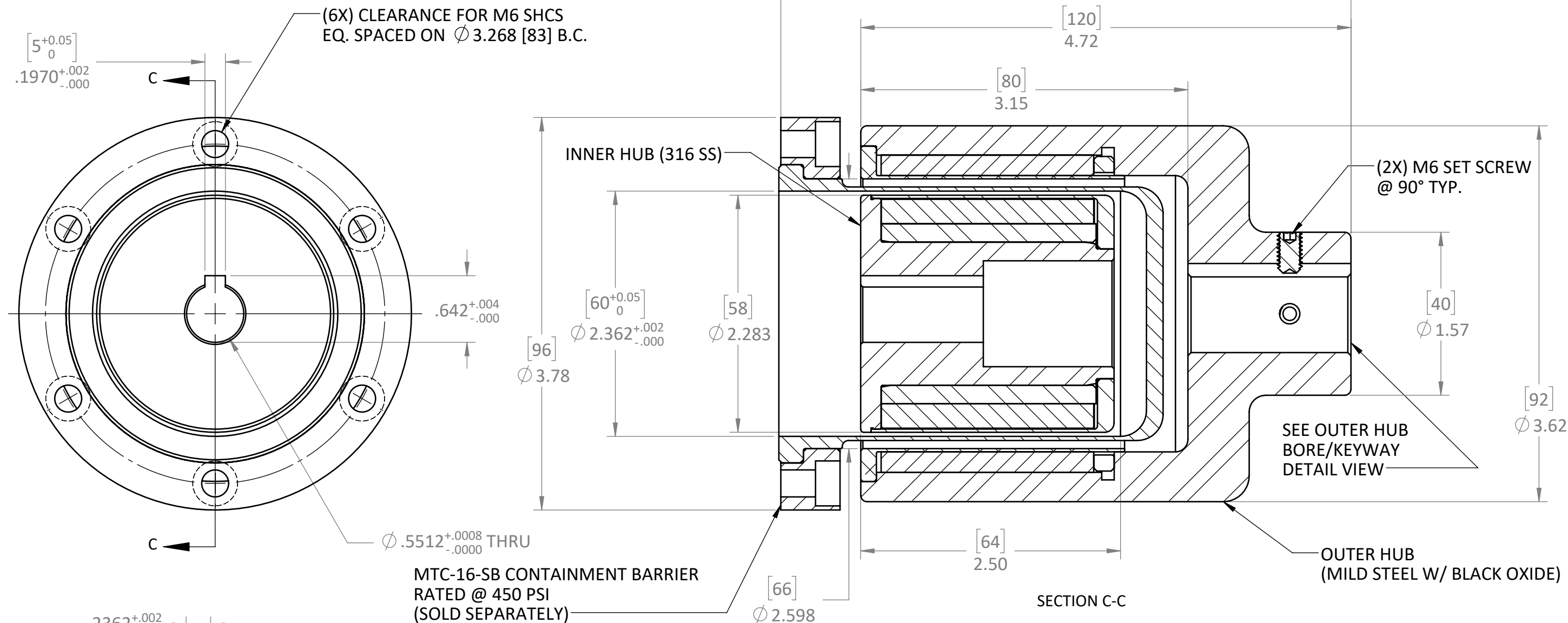


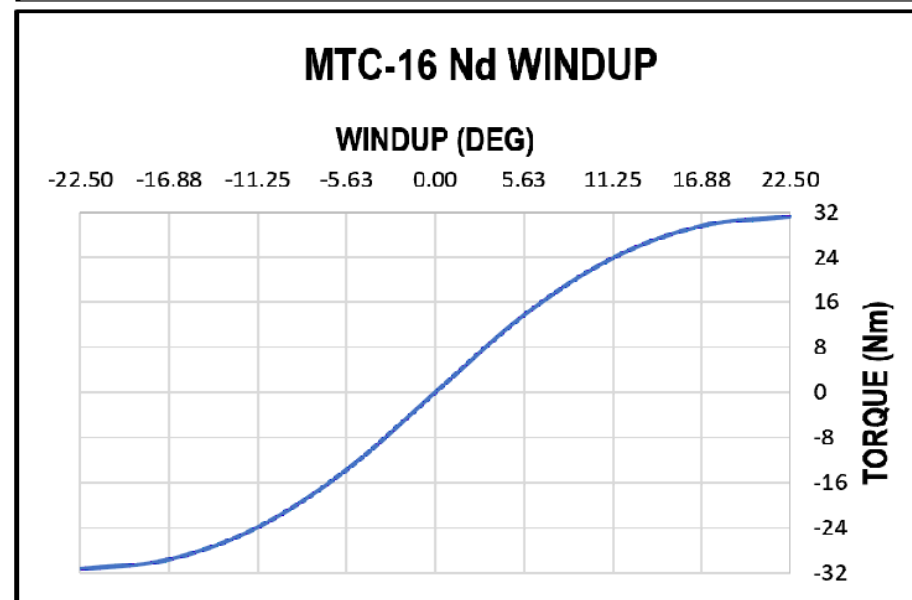
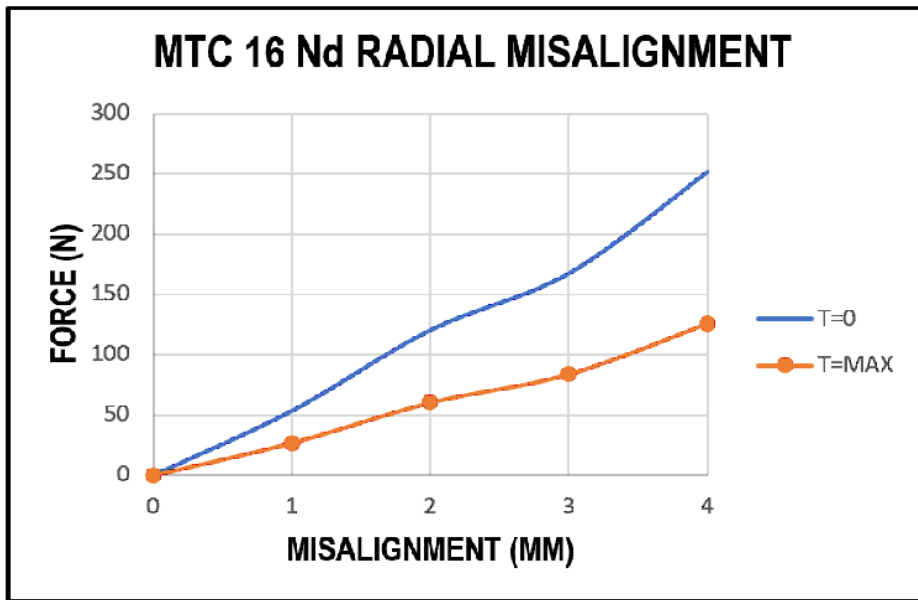
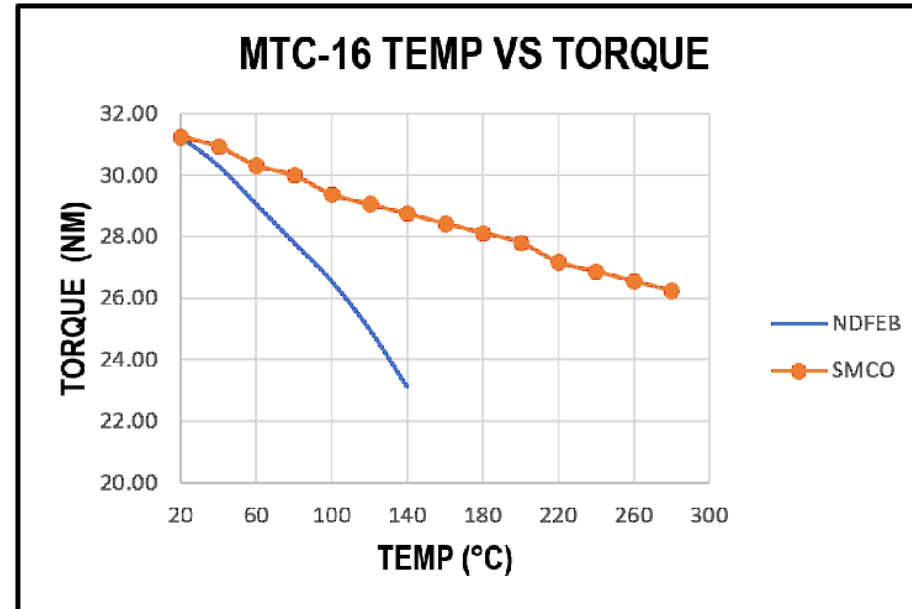
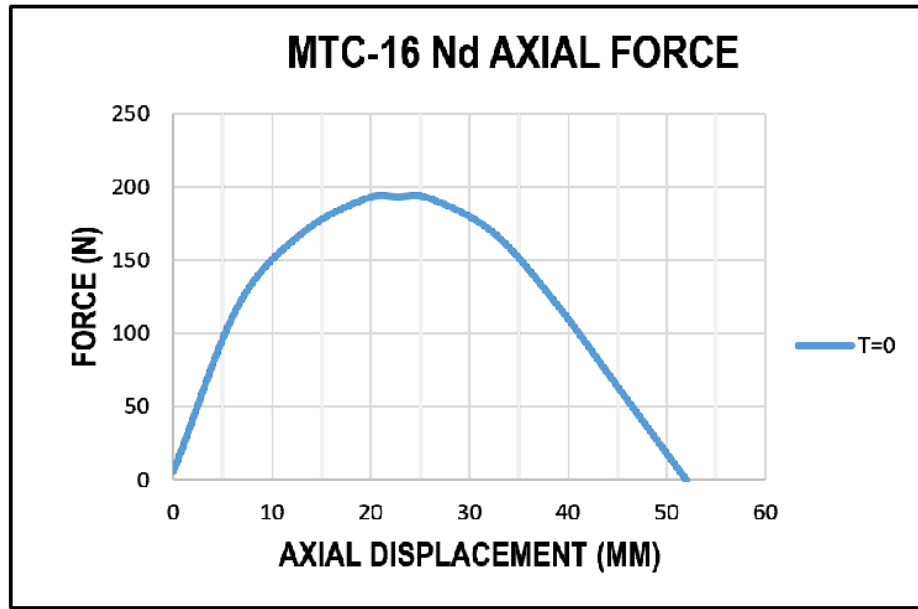
MTC-16	<b>RATED TORQUE</b>	<b>SLIP TORQUE</b>	<b>MAX SPEED</b>	<b>WEIGHT</b>	* BALANCING FOR HIGH SPEED APPLICATIONS REQUIRED	<b>REVISIONS</b>			
	16 Nm	26 Nm	13,000 RPM *	3 kg.		REV.	ECN.	DESCRIPTION	DATE
	140 LB-IN	230 LB-IN		6.6 lbs.					



NOTE: MTC-16-001 SHOWN

THIS DRAWING IS THE PROPERTY OF MAGNETIC TECHNOLOGIES LTD. AND IS SUPPLIED ON THE EXPRESS CONDITION THAT IT SHALL NOT BE LENT, COPIED, REPRODUCED NO DISCLOSED TO ANY OTHER PERSON, IN WHOLE OR IN PART WITHOUT THE WRITTEN CONSENT OF MAGNETIC TECHNOLOGIES LTD.

USED ON	SCALE 1:1	MATERIAL	<b>MAGNETIC TECHNOLOGIES LTD.</b> 43 TOWN FOREST ROAD OXFORD, MA 01540
UNLESS OTHERWISE SPECIFIED: ALL DIMENSIONS ARE IN INCHES TOLERANCES: DECIMAL: .XX ± .01 .XXX ± .005 ANGULAR: ± 1° GEN. CONCENTRICITY: .003 T.I.R. ASSY. CONCENTRICITY: .008 T.I.R. MACH. FILLETS: .010 R MACH. EDGES: .015 R OR CHMF. UNSPECIFIED RADII: .015 R IN MICROINCHES RMS 32 GEOMETRIC: TO MIL-ST'D. 8 REMOVE ALL BURRS & SHARP EDGES			
DRAWN ASM 2/8/2022		CHECKED	DESCRIPTION <b>16 Nm COUPLING</b>
SHEET 1 OF 2		SIZE: B	DWG. NO. REV.
			<b>MTC-16 CUT SHEET</b>



\*ABOVE CHARTS FOR NdFeB MAGNETS, SmCo CHARTS AVAILABLE UPON REQUEST

USED ON	SCALE 3:4	MATERIAL	 43 TOWN FOREST ROAD OXFORD, MA 01540
UNLESS OTHERWISE SPECIFIED: ALL DIMENSIONS ARE IN INCHES TOLERANCES: DECIMAL: .XX ± .01 .XXX ± .005 ANGULAR: ± 1° GEN. CONCENTRICITY: .001 T.I.R. MACH. FILLETS: .010 R MACH. EDGES: .015 R OR CHMF. UNSPECIFIED RADII: .015 R GEOMETRIC: TO MIL-ST'D. 8 REMOVE ALL BURRS & SHARP EDGES			
SHEET 2 OF 2 SIZE: B			DESCRIPTION <b>TECHNICAL DATA</b> DWG. NO. _____ REV. _____ <b>MTC-16 CUT SHEET</b>

PROPRIETARY AND CONFIDENTIAL  
 THIS DRAWING IS THE PROPERTY OF MAGNETIC TECHNOLOGIES LTD. AND IS SUPPLIED ON THE EXPRESS CONDITION THAT IT SHALL NOT BE LENT, COPIED, REPRODUCED NO DISCLOSED TO ANY OTHER PERSON, IN WHOLE OR IN PART WITHOUT THE WRITTEN CONSENT OF MAGNETIC TECHNOLOGIES LTD.