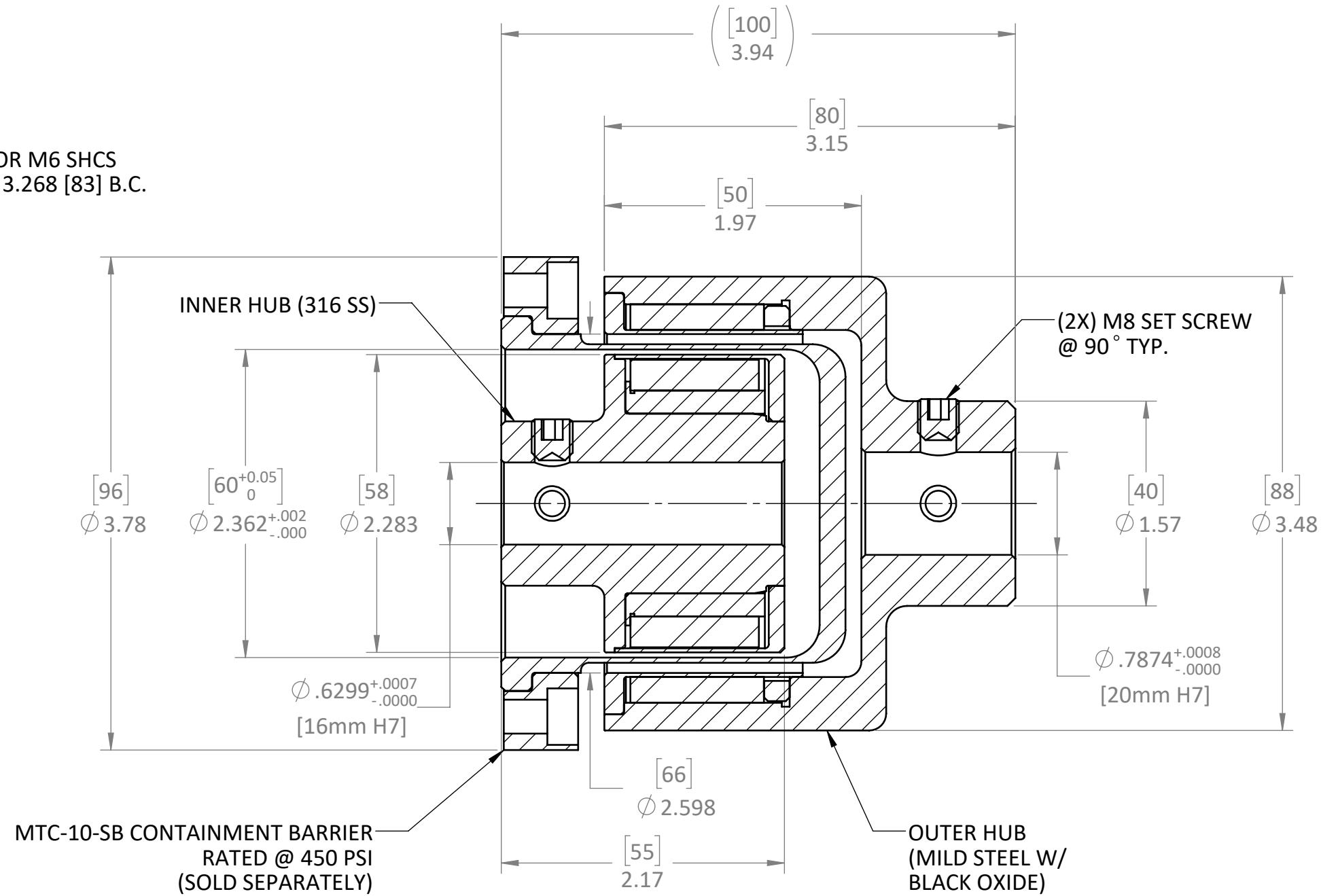
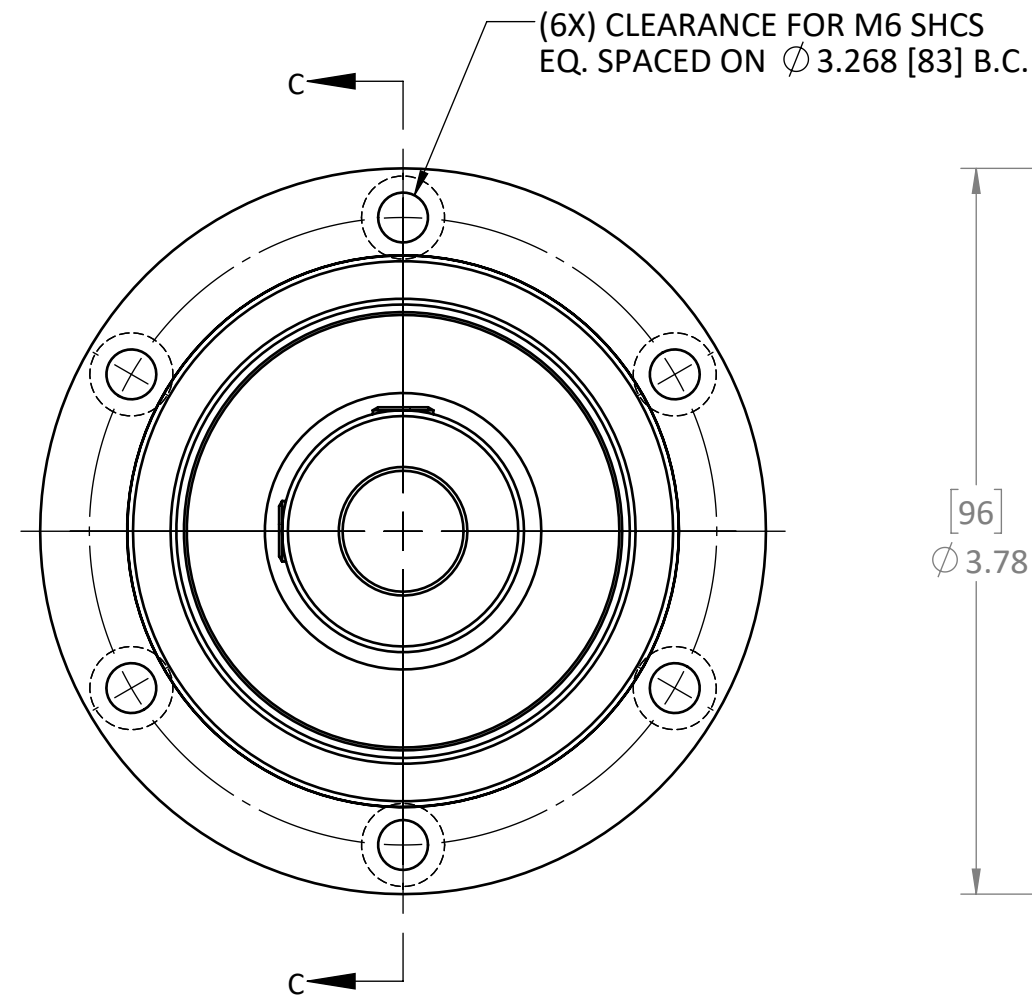


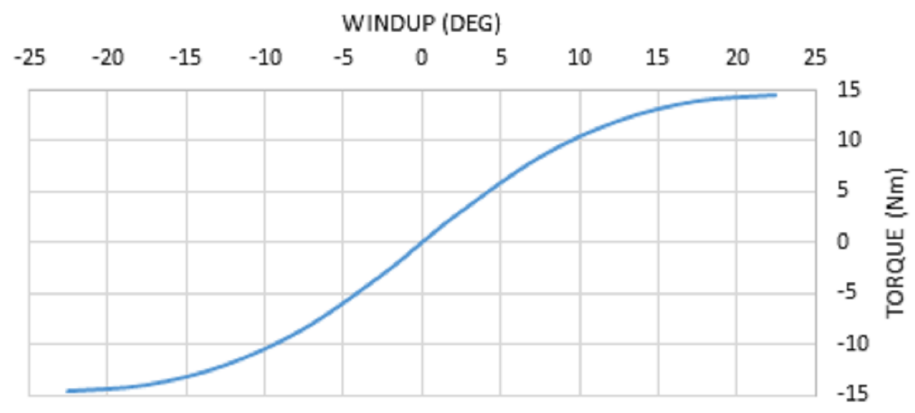
MTC-10	RATED TORQUE	SLIP TORQUE	MAX SPEED	WEIGHT	* BALANCING FOR HIGH SPEED APPLICATIONS REQUIRED	REVISIONS			
	10 Nm	12 Nm	13,000 RPM *	2.5 kg.		REV.	ECN.	DESCRIPTION	DATE
	90 LB-IN	105 LB-IN		5.5 lbs.					



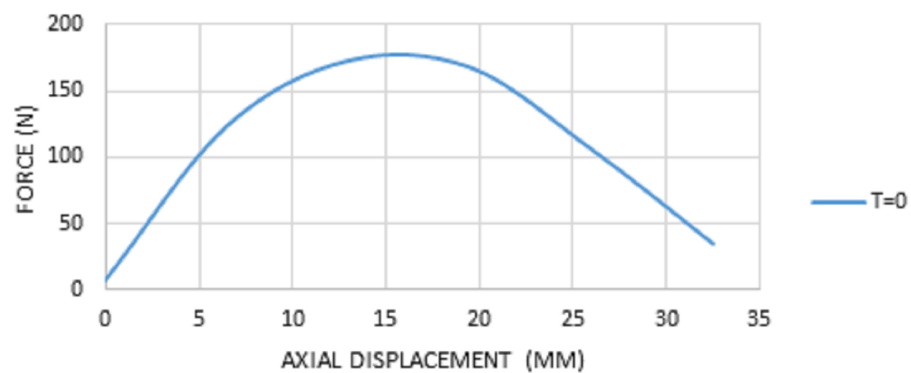
USED ON	SCALE 1:1	MATERIAL	 MAGNETIC TECHNOLOGIES LTD. 43 TOWN FOREST ROAD OXFORD, MA 01540
UNLESS OTHERWISE SPECIFIED:			
ALL DIMENSIONS ARE IN INCHES TOLERANCES: DECIMAL: .XX ± .01 .XXX ± .005 ANGULAR: ± 1° GEN. CONCENTRICITY: .003 T.I.R. ASSY. CONCENTRICITY: .008 T.I.R. MACH. FILLETS: .010 R MACH. EDGES: .015 R OR CHMF. UNSPECIFIED RADII: .015 R IN MICROINCHES RMS 32 GEOMETRIC: TO MIL-ST'D. 8 REMOVE ALL BURRS & SHARP EDGES			DRAWN R. A. 3/29/20 CHECKED ASM 1/4/2022 SHEET 1 OF 2 SIZE: B
			DESCRIPTION 10 Nm COUPLING DWG. NO. _____ REV. _____ MTC-10 CUT SHEET

THIS DRAWING IS THE PROPERTY OF MAGNETIC TECHNOLOGIES LTD. AND IS SUPPLIED ON THE EXPRESS CONDITION THAT IT SHALL NOT BE LENT, COPIED, REPRODUCED NO DISCLOSED TO ANY OTHER PERSON, IN WHOLE OR IN PART WITHOUT THE WRITTEN CONSENT OF MAGNETIC TECHNOLOGIES LTD.

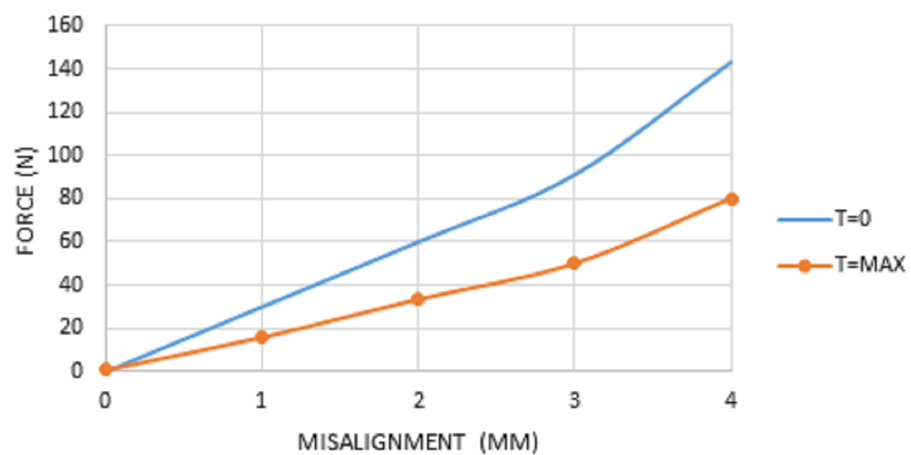
MTC-10 Nd WINDUP



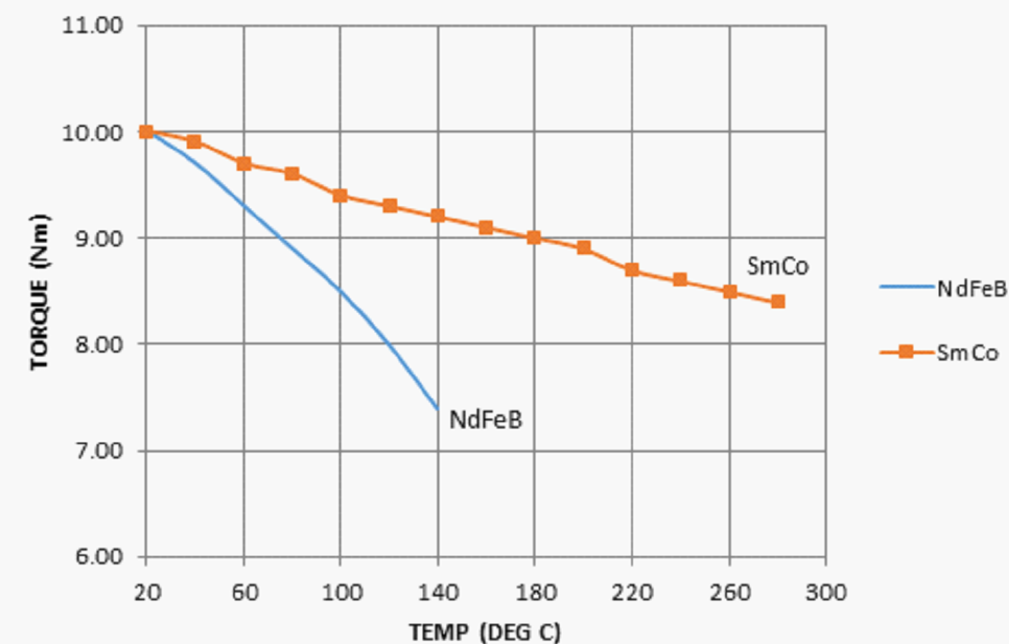
MTC-10 Nd AXIAL FORCE



MTC-10 Nd RADIAL MISALIGNMENT



MTC-10 TEMP VS TORQUE



***ABOVE CHARTS FOR NdFeB MAGNETS, SmCo CHARTS AVAILABLE UPON REQUEST**

PROPRIETARY AND CONFIDENTIAL
 THIS DRAWING IS THE PROPERTY OF MAGNETIC TECHNOLOGIES LTD. AND IS SUPPLIED ON THE EXPRESS CONDITION THAT IT SHALL NOT BE LENT, COPIED, REPRODUCED NO DISCLOSED TO ANY OTHER PERSON, IN WHOLE OR IN PART WITHOUT THE WRITTEN CONSENT OF MAGNETIC TECHNOLOGIES LTD.

USED ON	SCALE 3:4	MATERIAL	 43 TOWN FOREST ROAD OXFORD, MA 01540
UNLESS OTHERWISE SPECIFIED: ALL DIMENSIONS ARE IN INCHES TOLERANCES: DECIMAL: .XX ± .01 .XXX ± .005 ANGULAR: ± 1° GEN. CONCENTRICITY: .001 T.I.R. MACH. FILLETS: .010 R MACH. EDGES: .015 R OR CHMF. UNSPECIFIED RADII: .015 R IN MICROINCHES RMS 32 GEOMETRIC: TO MIL-ST'D. 8 REMOVE ALL BURRS & SHARP EDGES			
			DESCRIPTION TECHNICAL DATA DWG. NO. _____ REV. _____ MTC-10 CUT SHEET