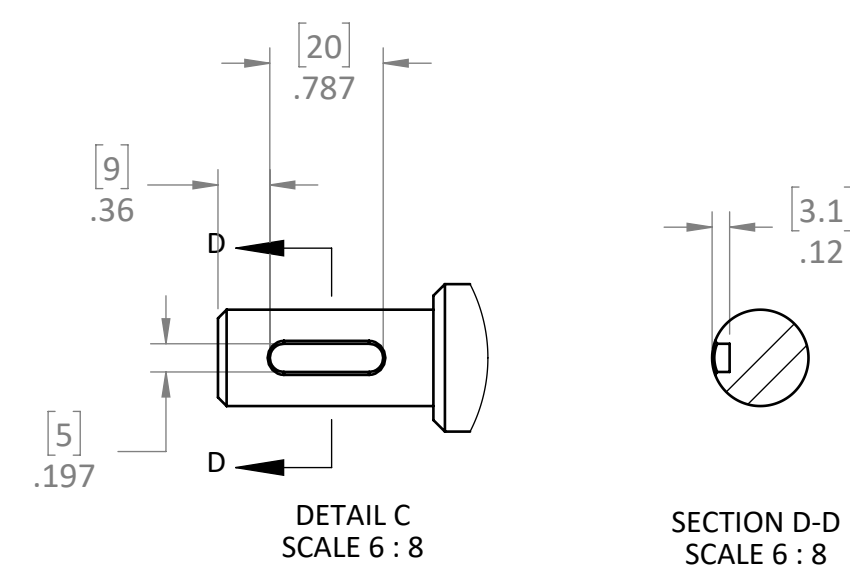
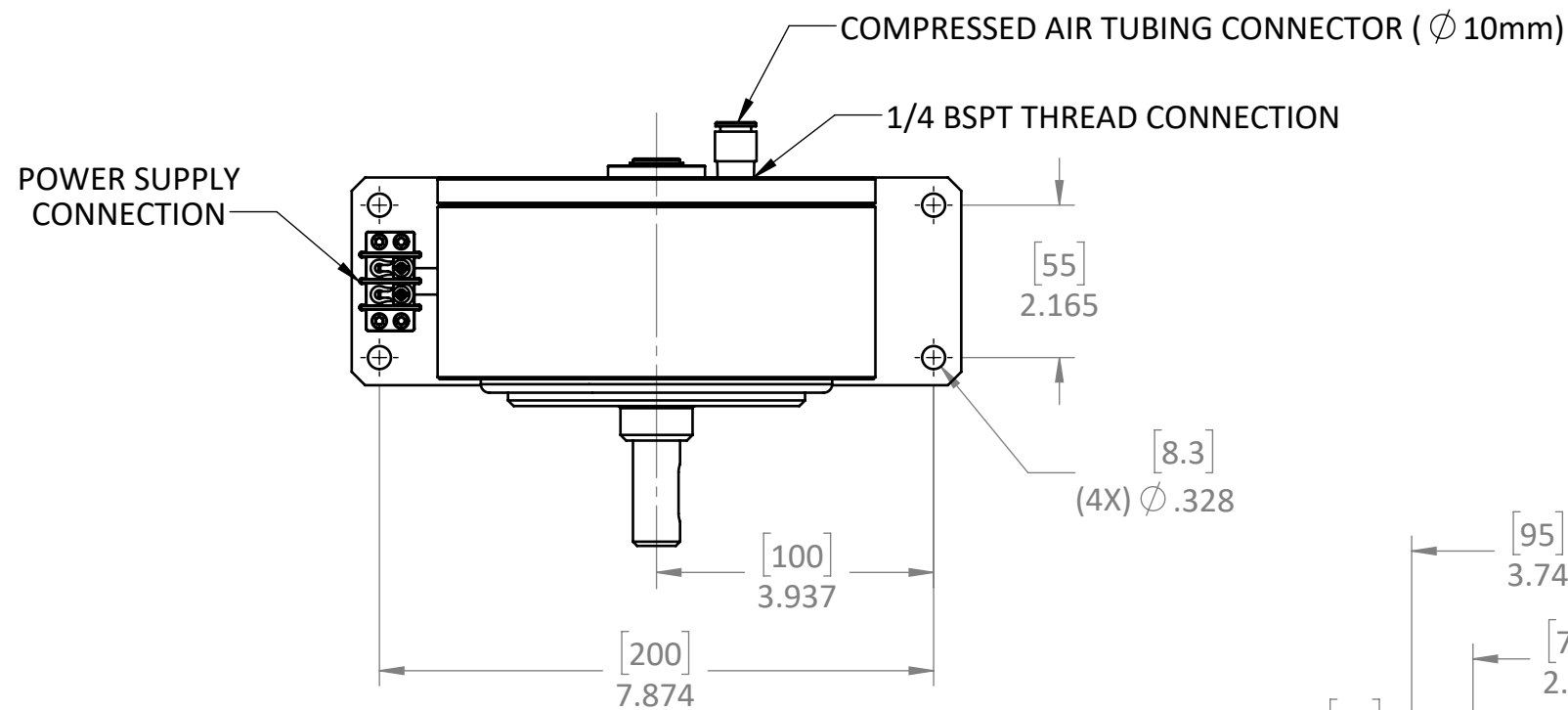
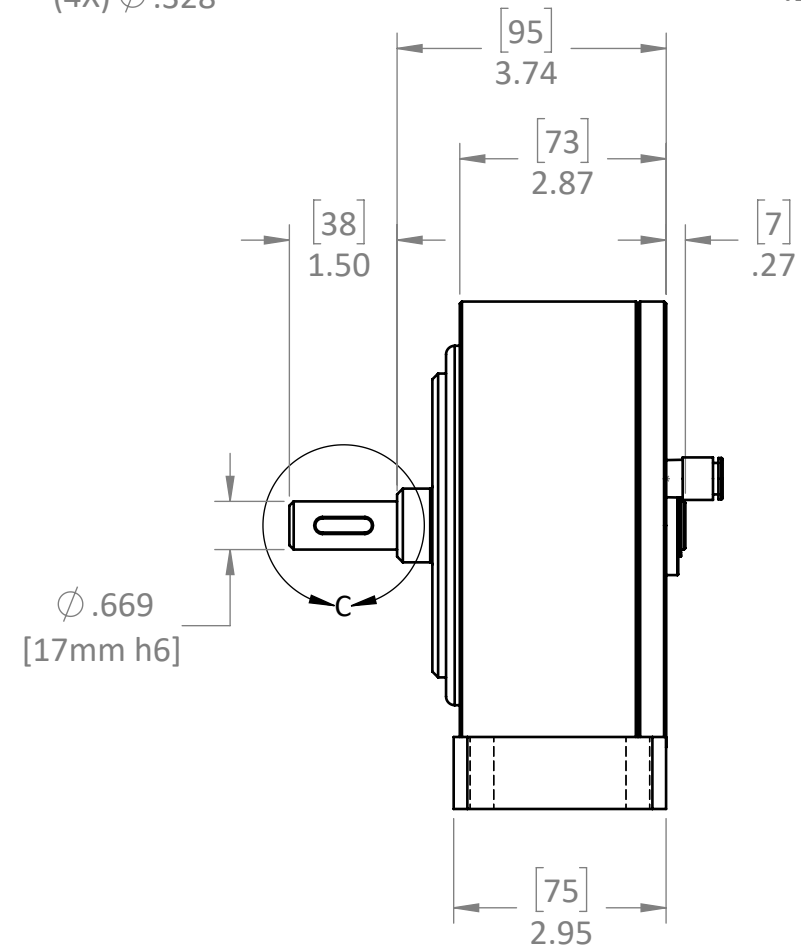
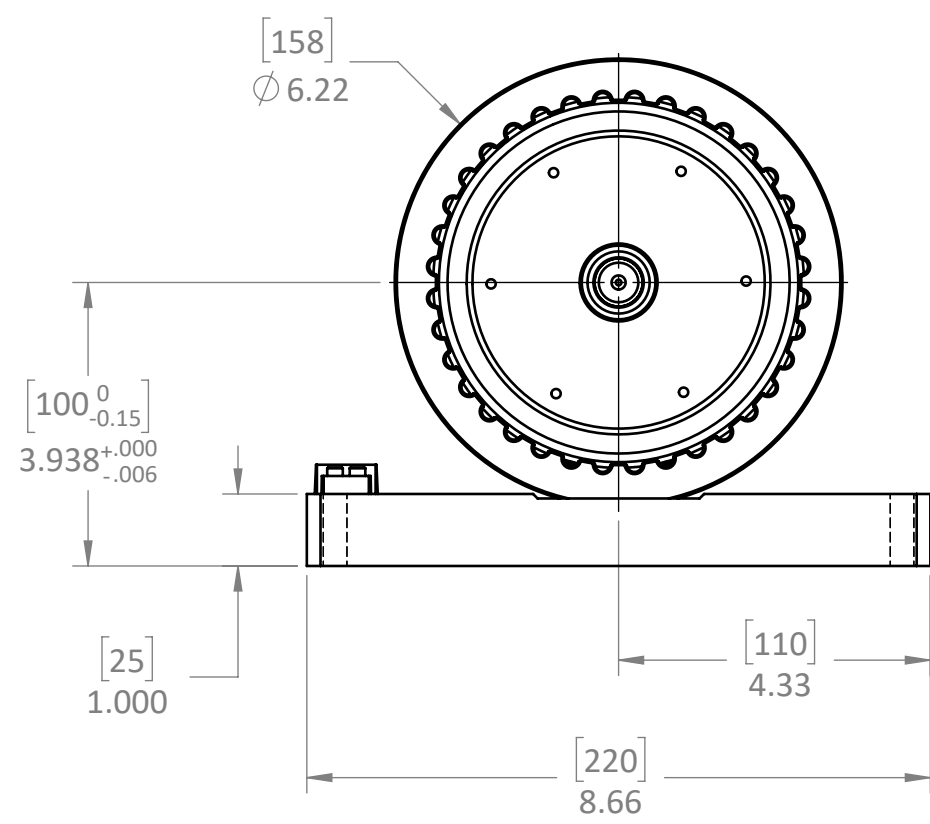


VOLTAGE	TORQUE @ WORKING CURRENT	WORKING CURRENT	RESISTANCE AT 25 °C (±10%)	VOLTAGE @ I1	RPM MAX.	POWER DISSIPATION (WATTS)				RESIDUAL TORQUE W/O CURRENT	AIR SUPPLY	AIR CONSUMPTION	WEIGHT	* BALANCING FOR HIGH SPEED APPLICATIONS REQUIRED
						INTERMITTENT		CONTINUOUS						
						W/ AIR	W/O AIR	W/ AIR	W/O AIR					
24 VDC	5.80 Nm	410 mA	60 OHM	25 VDC	6,000*	2500	1000	2000	200	5.00E-02 Nm	90 PSI	15 CFM	24.25 LB	



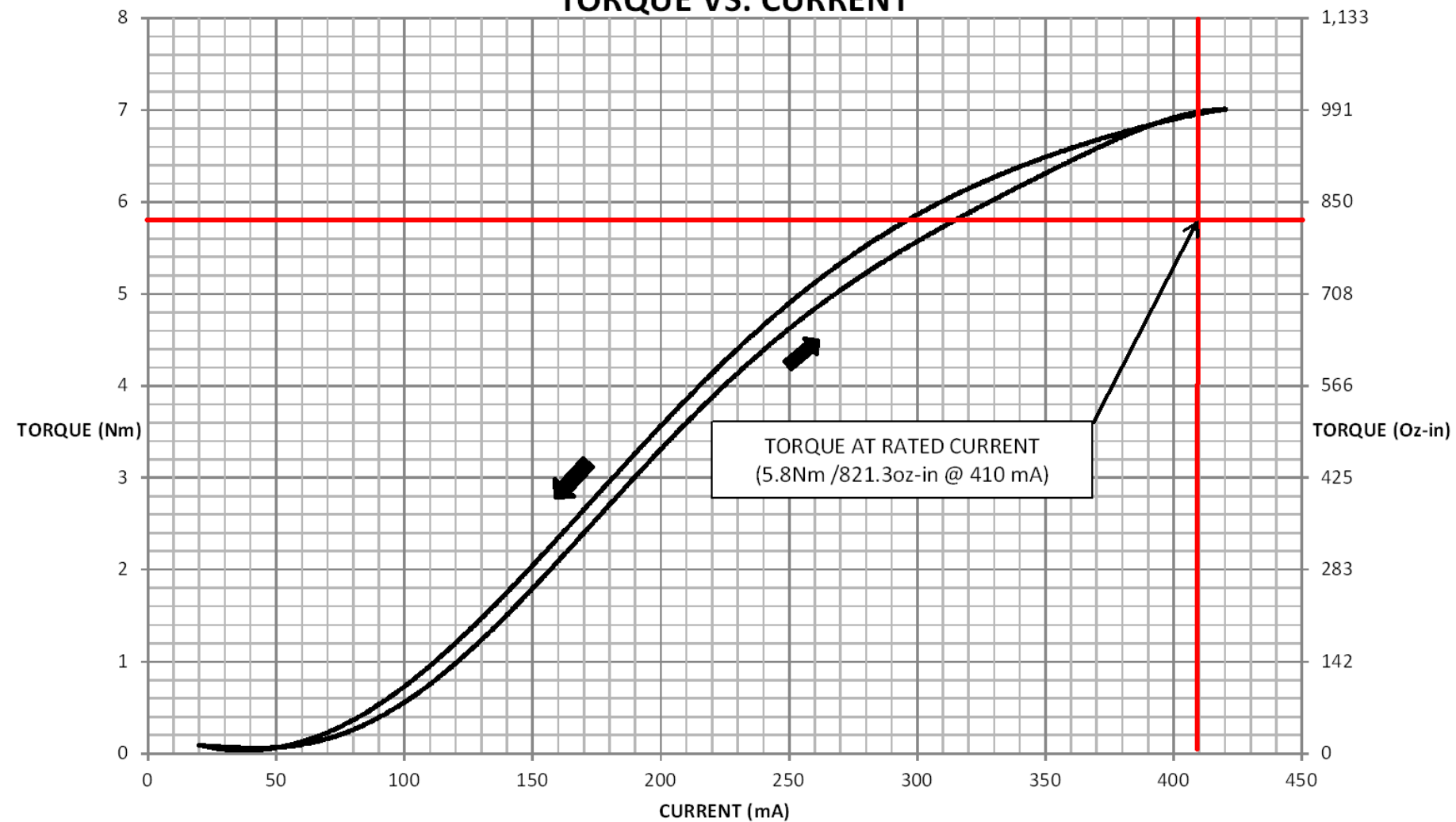
- NOTES:
1. AIR SUPPLY @ BRAKE: 85 - 95 PSI
 2. AIR SUPPLY MUST BE CLEAN/DRY
 3. HEARING PROTECTION REQUIRED, TYPICAL SOUND LEVEL @ 1 METER= 110 db



THIS DRAWING IS THE PROPERTY OF MAGNETIC TECHNOLOGIES LTD. AND IS SUPPLIED ON THE EXPRESS CONDITION THAT IT SHALL NOT BE LENT, COPIED, REPRODUCED NO DISCLOSED TO ANY OTHER PERSON, IN WHOLE OR IN PART WITHOUT THE WRITTEN CONSENT OF MAGNETIC TECHNOLOGIES LTD.

USED ON	SCALE 3:8	MATERIAL	MAGNETIC TECHNOLOGIES LTD. 43 TOWN FOREST ROAD OXFORD, MA 01540
UNLESS OTHERWISE SPECIFIED:		FINISH	
ALL DIMENSIONS ARE IN INCHES TOLERANCES: DECIMAL: .XX ± .01 .XXX ± .005 ANGULAR: ± 1° GEN. CONCENTRICITY: .003 T.I.R. ASSY. CONCENTRICITY: .008 T.I.R. MACH. FILLETS: .010 R MACH. EDGES: .015 R OR CHMF. UNSPECIFIED RADII: .015 R IN MICROINCHES RMS 32 GEOMETRIC: TO MIL-ST'D. 8 REMOVE ALL BURRS & SHARP EDGES			DESCRIPTION AIR COOLED HYST. BRAKE
DRAWN R. A. 4/7/20		CHECKED ASM 1/4/2022	DWG. NO. REV.
SHEET 1 OF 2		SIZE: B	AEB-750M-2 CUT SHEET

EB-750M-2DS ELECTRIC HYSTERESIS BRAKE TORQUE VS. CURRENT



NOTE:

- ACTUAL CURVE MAY VARY. THE TORQUE AT THE RATED CURRENT IS THE MINIMUM GUARANTEED TORQUE AT THAT CURRENT. TYPICAL BRAKES CAN BE 10-25% OVER RATED TORQUE, BUT THOSE RESULTS ARE **NOT** GUARANTEED.

USED ON	SCALE 3:8	MATERIAL	MAGNETIC TECHNOLOGIES LTD. 43 TOWN FOREST ROAD OXFORD, MA 01540 DESCRIPTION TECHNICAL DATA DWG. NO. _____ REV. _____ AEB-750M-2 CUT SHEET
UNLESS OTHERWISE SPECIFIED:			
ALL DIMENSIONS ARE IN INCHES TOLERANCES: DECIMAL: .XX ± .01 .XXX ± .005 ANGULAR: ± 1° GEN. CONCENTRICITY: .001 T.I.R. MACH. FILLETS: .010 R MACH. EDGES: .015 R OR CHMF. UNSPECIFIED RADII: .015 R IN MICROINCHES RMS 32 GEOMETRIC: TO MIL-ST'D. 8 REMOVE ALL BURRS & SHARP EDGES			
DRAWN R. A. 4/7/20		FINISH	
CHECKED ASM 1/4/2022		SIZE: B	

PROPRIETARY AND CONFIDENTIAL
 THIS DRAWING IS THE PROPERTY OF MAGNETIC TECHNOLOGIES LTD. AND IS SUPPLIED ON THE EXPRESS CONDITION THAT IT SHALL NOT BE LENT, COPIED, REPRODUCED NO DISCLOSED TO ANY OTHER PERSON, IN WHOLE OR IN PART WITHOUT THE WRITTEN CONSENT OF MAGNETIC TECHNOLOGIES LTD.