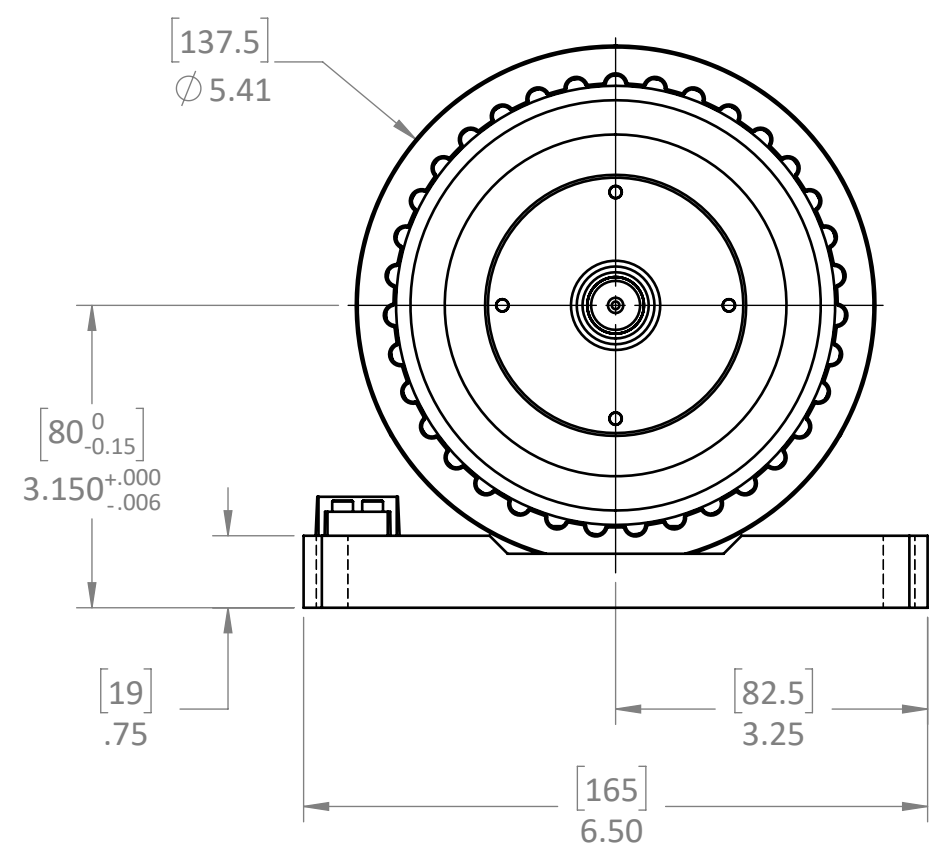
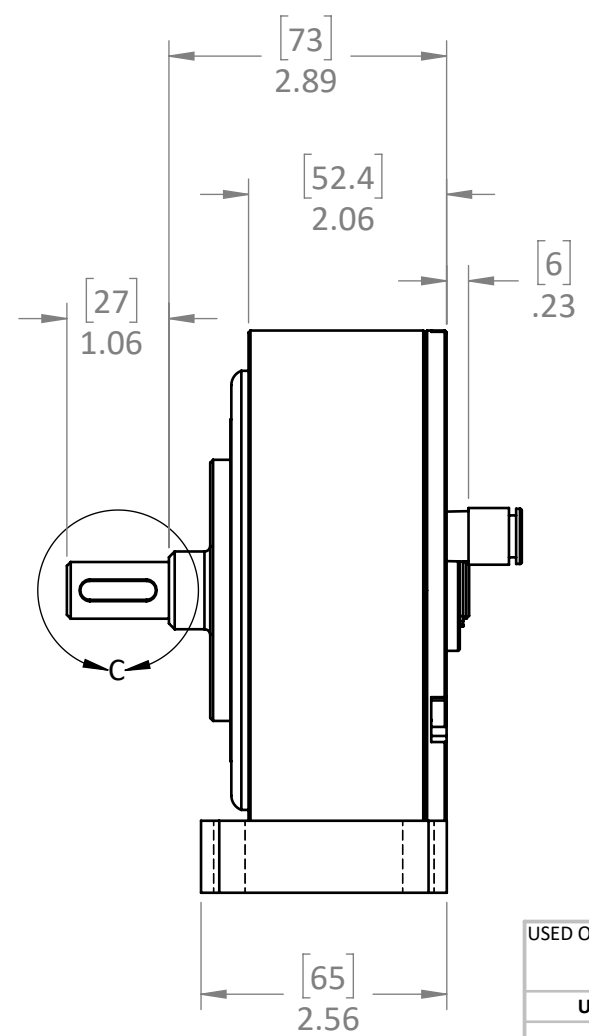
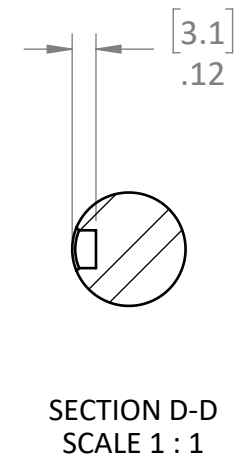
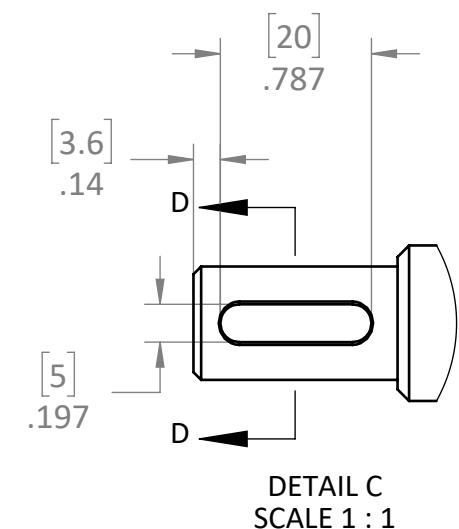
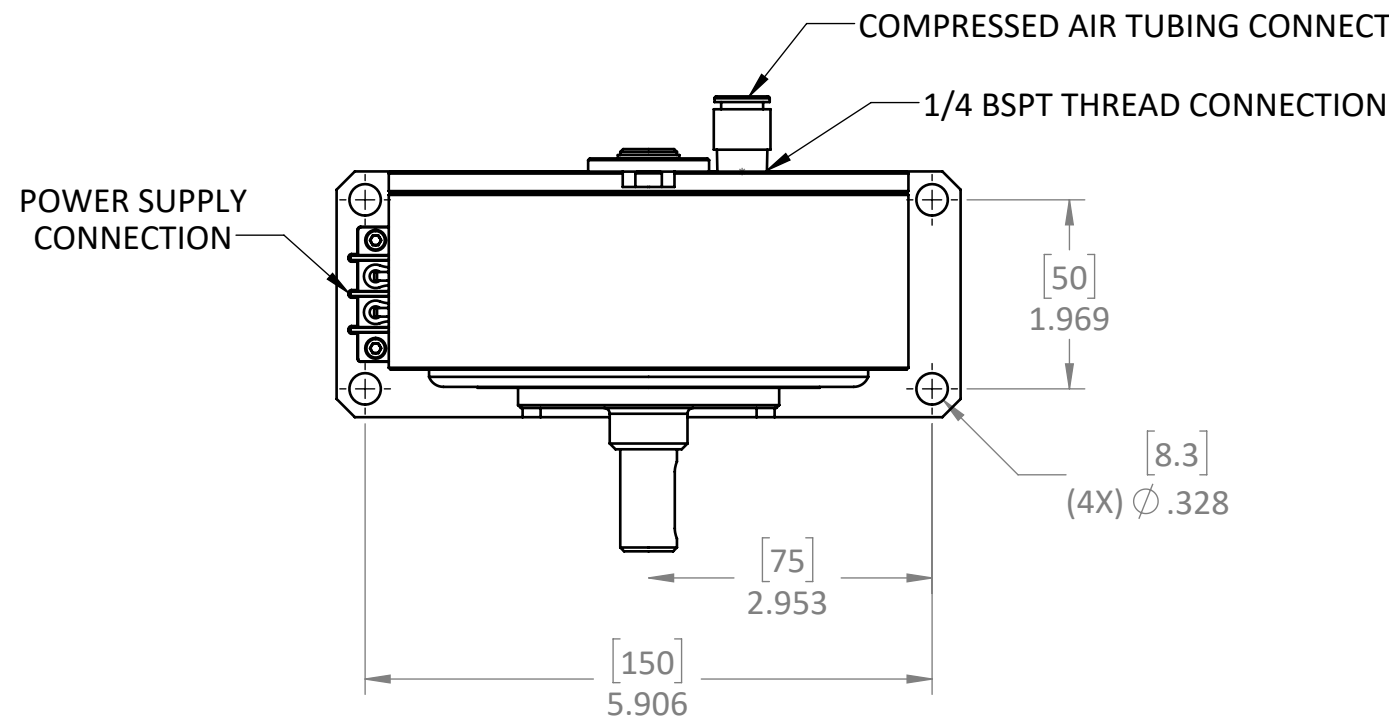


VOLTAGE	TORQUE @ WORKING CURRENT	WORKING CURRENT	RESISTANCE AT 25 °C ( $\pm 10\%$ )	VOLTAGE @ I1	RPM MAX.	POWER DISSIPATION (WATTS)				RESIDUAL TORQUE W/O CURRENT	AIR SUPPLY	AIR CONSUMPTION	WEIGHT
						INTERMITTENT		CONTINUOUS					
						W/ AIR	W/O AIR	W/ AIR	W/O AIR				
24 VDC	3.60 Nm	473 mA	50 OHM	24 VDC	8,000*	1800	670	1800	160	1.51E-02 Nm	90 PSI	15 CFM	13 LB

\* BALANCING FOR HIGH SPEED APPLICATIONS REQUIRED

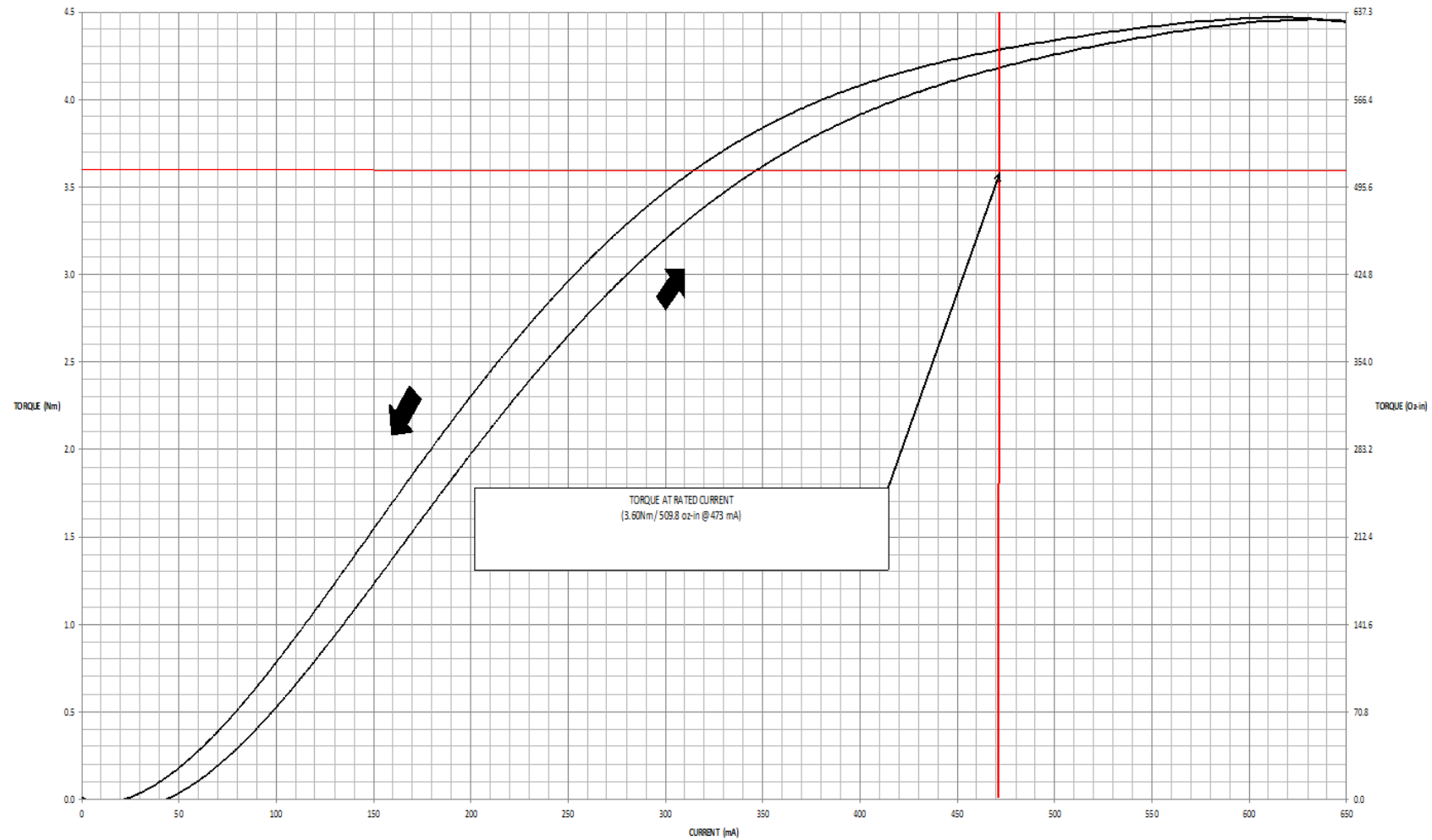


- NOTES:
1. AIR SUPPLY @ BRAKE: 85 - 95 PSI
  2. AIR SUPPLY MUST BE CLEAN/DRY
  3. HEARING PROTECTION REQUIRED, TYPICAL SOUND LEVEL @ 1 METER= 110 db

THIS DRAWING IS THE PROPERTY OF MAGNETIC TECHNOLOGIES LTD. AND IS SUPPLIED ON THE EXPRESS CONDITION THAT IT SHALL NOT BE LENT, COPIED, REPRODUCED NO DISCLOSED TO ANY OTHER PERSON, IN WHOLE OR IN PART WITHOUT THE WRITTEN CONSENT OF MAGNETIC TECHNOLOGIES LTD.

USED ON	SCALE 1:2	MATERIAL	 43 TOWN FOREST ROAD OXFORD, MA 01540 DESCRIPTION <b>AIR COOLED HYST. BRAKE</b> DWG. NO. _____ REV. _____ <b>AEB-450M-2 CUT SHEET</b>
UNLESS OTHERWISE SPECIFIED:		FINISH	
ALL DIMENSIONS ARE IN INCHES TOLERANCES: DECIMAL: .XX $\pm$ .01 .XXX $\pm$ .005 ANGULAR: $\pm 1^\circ$ GEN. CONCENTRICITY: .003 T.I.R. ASSY. CONCENTRICITY: .008 T.I.R. MACH. FILLETS: .010 R MACH. EDGES: .015 R OR CHMF. UNSPECIFIED RADII: .015 R IN MICROINCHES RMS 32 GEOMETRIC: TO MIL-ST'D. 8 REMOVE ALL BURRS & SHARP EDGES		DRAWN R. A. 4/7/20 CHECKED ASM 1/4/2022 SHEET 1 OF 2 SIZE: B	

AEB-450M-2 ELECTRIC HYSTERESIS BRAKE  
TORQUE VS. CURRENT



**NOTE:**

1. ACTUAL CURVE MAY VARY. THE TORQUE AT THE RATED CURRENT IS THE MINIMUM GUARANTEED TORQUE AT THAT CURRENT. TYPICAL BRAKES CAN BE 10-25% OVER RATED TORQUE, BUT THOSE RESULTS ARE **NOT** GUARANTEED.

USED ON	SCALE 1:2	MATERIAL	 43 TOWN FOREST ROAD OXFORD, MA 01540 DESCRIPTION <b>TECHNICAL DATA</b> DWG. NO. _____ REV. _____ <b>AEB-450M-2 CUT SHEET</b>
<b>UNLESS OTHERWISE SPECIFIED:</b> ALL DIMENSIONS ARE IN INCHES TOLERANCES: DECIMAL: .XX ± .01 .XXX ± .005 ANGULAR: ± 1° GEN. CONCENTRICITY: .001 T.I.R. MACH. FILLETS: .010 R MACH. EDGES: .015 R OR CHMF. UNSPECIFIED RADII: .015 R IN MICROINCHES RMS 32 GEOMETRIC: TO MIL-ST'D. 8 REMOVE ALL BURRS & SHARP EDGES		FINISH	
		DRAWN	
		CHECKED ASM 1/4/2022	
		SHEET 2 OF 2	
		SIZE: B	

PROPRIETARY AND CONFIDENTIAL  
 THIS DRAWING IS THE PROPERTY OF MAGNETIC TECHNOLOGIES LTD. AND IS SUPPLIED ON THE EXPRESS CONDITION THAT IT SHALL NOT BE LENT, COPIED, REPRODUCED NO DISCLOSED TO ANY OTHER PERSON, IN WHOLE OR IN PART WITHOUT THE WRITTEN CONSENT OF MAGNETIC TECHNOLOGIES LTD.